

# STOCK CATALOG



**AirControl**  
Products, Inc.

# Quick Ships ARE BACK!!!

- **Fire Dampers\***  
*1,3,5,10-day*
- **Louvers\***  
*1,3,5,10-day*
- **Fans**
- **MUA**
- **Air Distribution\***  
*2,5,10-day*
- **Plenums**
- **VAV Boxes\***  
*2,5,10-day*
- **Flex**



**Call us for ALL  
Quick Ships  
We CAN  
Make It Happen**

\* Restrictions apply. Contact your sales person for complete details, availability and restrictions.



# Table of Contents

<u>Diffusers</u>	4-8
<u>Grilles, Registers, Eggcrate &amp; Acc.</u>	9-13
<u>VAV Boxes</u>	14-15
<u>Motor Operated Round Dampers</u>	16
<u>Spiral Pipe, Sheet Metal Fittings &amp; Acc.</u>	17-31
<u>Hangers, Rope &amp; Fasteners</u>	32-33
<u>Access Doors &amp; Flexible Duct</u>	34-38
<u>Exhaust Fans &amp; Accessories</u>	39-44
<u>Bath Fans</u>	45
<u>Wall &amp; Roof Caps</u>	46
<u>Pipe Portals &amp; Curbs</u>	47
<u>Rails</u>	48
<u>Wall &amp; Baseboard Heaters</u>	49-50
<u>Louvers &amp; Brick Vents</u>	51
<u>Fire Dampers</u>	52-53
<u>Smoke Detectors</u>	54
<u>Draw Band, Tools</u>	54
<u>HVAC Guidelines</u>	55-56
<u>Complete Product Index</u>	57-58

Product specifications, appearance and stocking locations are subject to change without notice.

Color bars indicate stocking locations:

Blue=Cleveland, Orange=Columbus & Gray=Toledo



4-8



9-13



14-15



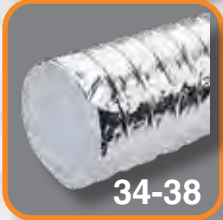
16



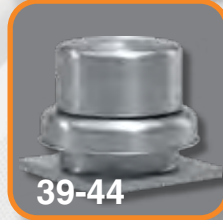
17-31



32-33



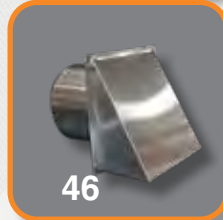
34-38



39-44



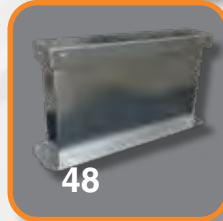
45



46



47



48



49-50



51



52-53



54



# SQUARE CEILING DIFFUSERS

## Model SCD-Square Cone Diffuser



Number	Inlet Size	Face Size	CLE	CBUS	TOL
SCD12126	6"	12 x 12			
SCD12128	8"	12 x 12			
SCD20206	6"	20 x 20			
SCD20208	8"	20 x 20			
SCD202010	10"	20 x 20			
SCD24246	6"	24 x 24			
SCD24248	8"	24 x 24			
SCD242410	10"	24 x 24			
SCD242412	12"	24 x 24			
SCD242414	14"	24 x 24			
SCD242415	15"	24 x 24			
SCDCONE	4th Cone for SCD 24x24				

All sizes are available with (3) concentric cones. Optional fourth cone available in 24" x 24" only.

- Cones: One piece die-formed with smooth, aerodynamically designed surfaces and no corner joints.
- Construction: Steel • Finish: White

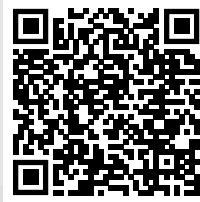
## Model SCDA-Square Cone Diffuser Adjustable



Number	Inlet Size	Frame	CLE	CBUS	TOL
SCDA24246	6"	24 x 24			
SCDA24248	8"	24 x 24			
SCDA242410	10"	24 x 24			
SCDA242412	12"	24 x 24			

- SCDA includes adjustable pattern controllers to provide either a horizontal or vertical air pattern for heating and cooling applications.
  - Cones: One piece die-formed with smooth, aerodynamically designed surfaces and no corner joints.
  - Construction: Steel • Finish: White • Type 31 Lay-In • Face size 24"x24"
- All sizes are available with (3) concentric cones. Optional fourth cone available in 24" x 24" only.

## Model SPD-Square Plaque Diffuser



Number	Inlet Size	Face Size	CLE	CBUS	TOL
SPD12126	6"	12 x 12			
SPD12128	8"	12 x 12			
SPD20206	6"	20 x 20			
SPD020208	8"	20 x 20			
SPD020210	10"	20 x 20			
SPD24246	6"	24 x 24			
SPD24248	8"	24 x 24			
SPD242410	10"	24 x 24			
SPD242412	12"	24 x 24			
SPD242414	14"	24 x 24			
SPD1212Baffle	SPD Baffle	12 x 12			
SPD2424Baffle	SPD Baffle	24 x 24			

- Face panel has smooth edges and rounded off corners to blend with back cone.
- Construction: Steel
- Back cone is one-piece die-formed with smooth, surfaces and no corner joints.
- Finish: White • Type 31 Lay-In

## Molded R6 Insulation Panel



- For square cone and square plaque diffusers

Number	Size	CLE	CBUS	TOL
INSR6P	24 x 24			

## Model SMD-Louvered Face Directional Diffuser



Frame Style: Surface Mounted - Bevelled					
Number	Inlet Size	Air Pattern	CLE	CBUS	TOL
SMD61S66	6 x 6	1 Way			
SMD62S66	6 x 6	2 Way			
SMD62G66	6 x 6	2 Way Corner			
SMD63A66	6 x 6	3 Way			
SMD64A66	6 x 6	4 Way			
SMD61S99	9 x 9	1 Way			
SMD62S99	9 x 9	2 Way			
SMD62G99	9 x 9	2 Way Corner			
SMD63A99	9 x 9	3 Way			
SMD64A99	9 x 9	4 Way			
SMD61S1212	12 x 12	1 Way			
SMD62S1212	12 x 12	2 Way			
SMD62G1212	12 x 12	2 Way Corner			
SMD63A1212	12 x 12	3 Way			
SMD64A1212	12 x 12	4 Way			
SMD64A1515	15 x 15	4 Way			
SMD64A1818	18 x 18	4 Way			



Frame Style: Lay In Inverted T-Bar						
Number	Inlet Size	Face Size	Air Pattern	CLE	CBUS	TOL
SMD3P1S66	6 x 6	24 x 24	1 Way			
SMD3P2S66	6 x 6	24 x 24	2 Way			
SMD3P2G66	6 x 6	24 x 24	2 Way Corner			
SMD3P3A66	6 x 6	24 x 24	3 Way			
SMD3P4A66	6 x 6	24 x 24	4 Way			
SMD3P1S99	9 x 9	24 x 24	1 Way			
SMD3P2S99	9 x 9	24 x 24	2 Way			
SMD3P2G99	9 x 9	24 x 24	2 Way Corner			
SMD3P3A99	9 x 9	24 x 24	3 Way			
SMD3P4A99	9 x 9	24 x 24	4 Way			
SMD3P1S1212	12 x 12	24 x 24	1 Way			
SMD3P2S1212	12 x 12	24 x 24	2 Way			
SMD3P2G1212	12 x 12	24 x 24	2 Way Corner			
SMD3P3A1212	12 x 12	24 x 24	3 Way			
SMD3P4A1212	12 x 12	24 x 24	4 Way			
SMD3P4A1515	15 x 15	24 x 24	4 Way			
SMD3P4A1818	18 x 18	24 x 24	4 Way			



- Directional core is easily removable at the diffuser face without requiring special tools.
- Optional square to round neck adapters available.
- Construction: Steel • Finish: White

Indicates stocking location



# PERFORATED DIFFUSERS

## Model PDDR/3 Perforated Return Diffuser



Number	Inlet Size	Face Size	CLE	CBUS	TOL
PDDR36	6"	24 x 24			
PDDR38	8"	24 x 24			
PDDR310	10"	24 x 24			
PDDR312	12"	24 x 24			
PDDR314	14"	24 x 24			
PDDR32210	22 x 10	24 x 12			
PDDR32222	22 x 22	24 x 24			

- Hinged, removable perforated faceplate with quick release spring latches.
  - Construction: Steel • Finish: White • Frame: Type 3 Lay-In

## Model PDMC/3 Modular Core Diffuser



Number	Inlet Size	Face Size	CLE	CBUS	TOL
PDMC388	8 x 8	24 x 24			
PDMC31212	12 x 12	24 x 24			
PDMC31818	18 x 18	24 x 24			

- Four louvered air pattern modules located at the neck, can be easily repositioned in the field without tools.
  - Perforated face panel has 3/16" diameter holes staggered 1/4" on center.
  - Construction: Steel • Finish: White • Frame: Type 3 Lay-In • Air Pattern: 4 way

## Model PDF/3 Perforated Supply Diffuser



Number	Inlet Size	Face Size	CLE	CBUS	TOL
PDF36	6"	24 x 24			
PDF38	8"	24 x 24			
PDF310	10"	24 x 24			
PDF312	12"	24 x 24			
PDF314	14"	24 x 24			

- Louvered air pattern controllers located on the diffuser face are field adjustable to the desired air pattern.
  - Hinged, removable perforated faceplate with quick release spring latches.
  - Construction: Steel • Finish: White • Frame: Type 3 Lay-In • Air Pattern: 4 way

## Model PDC Perforated Supply Diffuser



Number	Inlet Size	Face Size	CLE	CBUS	TOL
PDC36	6"	24 x 24			
PDC38	8"	24 x 24			
PDC310	10"	24 x 24			
PDC312	12"	24 x 24			
PDC314	14"	24 x 24			

- Individually pivoting curved blades at the inlet neck for field adjustable for horizontal to vertical air pattern.
  - Hinged, removable perforated faceplate with quick release spring latches.
  - Construction: Steel • Finish: White • Frame: Type 3 Lay-In • Air Pattern: 4 way



## Thermally Powered VAV Diffusers

Number	Inlet Size	CLE	CBUS	TOL
VPD24246	6"			
VPD24248	8"			
VPD242410	10"			
VPD242412	12"			



- Individual VAV zone control • ARI certified data
- Individual heating and cooling set points
- Balancing/force open mode • Easy adjustable minimum airflow
- Low-pressure drop and quiet operation
- Room side access of all control adjustments
- 10 Year Warranty • Construction: Steel • Finish: White • 24" x 24" Lay-In • Air Pattern: 4 way

## Pressure Relief Collar

PRC6	8"	10"	12"
PRC6	6"		
PRC8	8"		
PRC10	10"		
PRC12	12"		

The Acutherm VAV Diffusers sense when heating or cooling is required, and automatically adjusts itself to maintain control. The temperature set points for heating and cooling modes can be adjusted individually. With these features the diffuser responds to changes in heating/cooling demand with smooth and accurate transitions.

The Pressure Relief Collar (PRC) slips over the diffuser inlet to provide a simple and inexpensive solution to control inlet static pressure. A PRC is recommended for applications where duct pressure may exceed the recommended limit, such as installations with a constant volume air handler where multiple units are operating with a mostly closed damper.



NOTE: PRC used plenum return applications

## Model SCVD-Curved Vane Diffuser

Number	Inlet Size	Frame	CLE	CBUS	TOL
SCVD366	6 x 6	Surface			
SCVD388	8 x 8	Surface			
SCVD31010	10 x 10	Surface			
SCVD31212	12 x 12	Surface			
SCVD31414	14 x 14	Surface			



- Curved vanes are individually adjustable from the grille face.
- Damper: VCS3 Opposed blade damper
- Construction: Formed Steel • Finish: White

## Model RCDE-Round Cone Diffuser

Number	Inlet Size	CLE	CBUS	TOL
RCDE6	6"			
RCDE8	8"			
RCDE10	10"			
RCDE12	12"			



- Two horizontal discharge settings for different flow rate conditions.
- Deeply contoured outer cone
- Construction: Steel • Finish: White

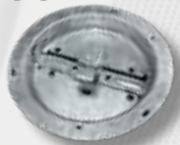
Indicates stocking location

**Model 16 Round Residential Ceiling Diffusers**



Number	Inlet Size	CLE	CBUS	TOL
1606	6"			
1608	8"			

**Model 12B Round Damper w/Ring**



Number	Inlet Size	CLE	CBUS	TOL
12B06D	6"			
12B08D	8"			

**Model 3800 Damper without Ring**



Number	Inlet Size	CLE	CBUS	TOL
3806	6"			
3808	8"			

**Model VCR9 Radial Shutter Damper**



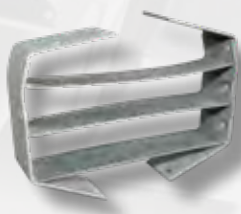
Number	Size	CLE	CBUS	TOL
VCR96	6"			
VCR98	8"			
VCR910	10"			
VCR912	12"			
VCR914	14"			

**Model VCS3 Opposed Blade Damper**



Number	Size	CLE	CBUS	TOL
VCS366	6 x 6			
VCS388	8 x 8			
VCS399	9 x 9			
VCS31010	10 x 10			
VCS31212	12 x 12			
VCS31414	14 x 14			
VCS31515	15 x 15			
VCS31818	18 x 18			
VCS32210	22 x 10			
VCS32222	22 x 22			
VCS32412	24 x 12			

**Round Equalizing Grids**

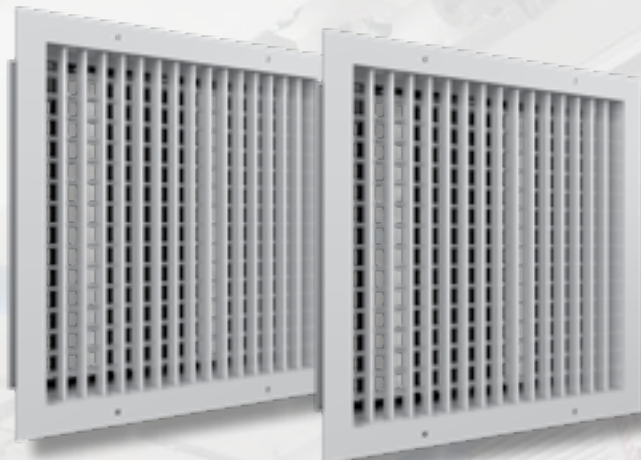


Number	Size	CLE	CBUS	TOL
EGR6	6"			
EGR8	8"			
EGR10	10"			
EGR12	12"			
EGR14	14"			

## Model 520D-Double Deflection Louvered Supply Register with Damper

- CFM is based on @<NC30 please see Price Industries catalog for more details.
- Countersunk screw holes with oval head screws
- Mounting: Surface Frame
- Blade Spacing: 3/4"
- Construction: Steel • Finish: White

Number	Neck-Size	@<NC30	CLE	CBUS	TOL	Number	Neck-Size	@<NC30	CLE	CBUS	TOL
520D66	6 x 6	180				520D186	18 x 6	480			
520D84	8 x 4	180				520D188	18 x 8	720			
520D86	8 x 6	220				520D1810	18 x 10	855			
520D88	8 x 8	390				520D1812	18 x 12	1070			
520D104	10 x 4	220				520D204	20 x 4	370			
520D106	10 x 6	340				520D206	20 x 6	550			
520D108	10 x 8	370				520D208	20 x 8	650			
520D1010	10 x 10	480				520D2010	20 x 10	945			
520D124	12 x 4	260				520D2012	20 x 12	1070			
520D126	12 x 6	390				520D244	24 x 4	525			
520D128	12 x 8	480				520D246	24 x 6	590			
520D1210	12 x 10	550				520D248	24 x 8	720			
520D1212	12 x 12	720				520D2410	24 x 10	1280			
520D144	14 x 4	300				520D2412	24 x 12	1440			
520D146	14 x 6	370				520D2414	24 x 14	1660			
520D148	14 x 8	550				520D2418	24 x 18	1950			
520D1410	14 x 10	650				520D304	30 x 4	550			
520D1412	14 x 12	855				520D306	30 x 6	790			
520D1414	14 x 14	945				520D308	30 x 8	945			
520D164	16 x 4	340				520D3010	30 x 10	1460			
520D166	16 x 6	415				520D3012	30 x 12	1640			
520D168	16 x 8	650				520D364	36 x 4	650			
520D1610	16 x 10	720				520D366	36 x 6	810			
520D1612	16 x 12	945				520D368	36 x 8	1070			
520D184	18 x 4	390				520D3610	36 x 10	1720			
						520D3612	36 x 12	1950			



Indicates stocking location 



# GRILLES & REGISTERS



## Model 530-Louvered Return Grille

- Countersunk screw holes with oval head screws on surface mounted grilles.
- Blade Spacing: 3/4" - fixed louvers - 45 degree deflection
- Construction: Steel • Finish: White

Number	Neck-Size	Frame	CLE	CBUS	TOL
53066	6 x 6	Surface			
53084	8 x 4	Surface			
53086	8 x 6	Surface			
53088	8 x 8	Surface			
530106	10 x 6	Surface			
530108	10 x 8	Surface			
5301010	10 x 10	Surface			
5301010LI	10 x 10	Lay-in-NSH			
530126	12 x 6	Surface			
530128	12 x 8	Surface			
5301210	12 x 10	Surface			
5301212	12 x 12	Surface			
530146	14 x 6	Surface			
530148	14 x 8	Surface			
5301410	14 x 10	Surface			
5301412	14 x 12	Surface			
5301414	14 x 14	Surface			
530166	16 x 6	Surface			
530168	16 x 8	Surface			
5301610	16 x 10	Surface			
5301612	16 x 12	Surface			
5301614	16 x 14	Surface			
5301616	16 x 16	Surface			
530186	18 x 6	Surface			
530188	18 x 8	Surface			
5301810	18 x 10	Surface			
5301812	18 x 12	Surface			
5301814	18 x 14	Surface			
5301816	18 x 16	Surface			
5301818	18 x 18	Surface			
530206	20 x 6	Surface			

Number	Neck-Size	Frame	CLE	CBUS	TOL
530208	20 x 8	Surface			
5302010	20 x 10	Surface			
5302012	20 x 12	Surface			
5302018	20 x 18	Surface			
5302020	20 x 20	Surface			
530224LI	22 X 4	Lay In			
530226LI	22 x 6	Lay In			
5302210LI	22 x 10	Lay In			
5302222LI	22 x 22	Lay In			
530248	24 x 8	Surface			
5302410	24 x 10	Surface			
5302414	24 x 12	Surface			
5302414	24 x 14	Surface			
5302416	24 x 16	Surface			
5302418	24 x 18	Surface			
5302420	24 x 20	Surface			
5302424	24 x 24	Surface			
530308	30 x 8	Surface			
5303010	30 x 10	Surface			
5303012	30 x 12	Surface			
5303018	30 x 18	Surface			
5303020	30 x 20	Surface			
5303024	30 x 24	Surface			
5303030	30 x 30	Surface			
5303610	36 x 10	Surface			
5303612	36 x 12	Surface			
5303614	36 x 14	Surface			
5303618	36 x 18	Surface			
5303620	36 x 20	Surface			
5303624	36 x 24	Surface			
5303630	36 x 30	Surface			
5304622LI	46 x 22	Lay In			

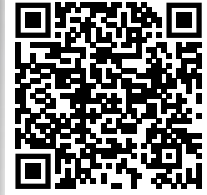


### Model 530FF-Louvered Face Filter Return Grille



Number	Size	Frame	CLE	CBUS	TOL
5302424FF	24 x 24	Lay-In			

- Hinged tab mechanism with 1/4 turn quick-release fasteners.
- Blade Spacing: 3/4" - 45 degree deflection • Accepts 1" - 20 x 20 filter
- Construction: Steel • Finish: White



### Model 10-Perforated Face Return Grille



Number	Size	Frame	CLE	CBUS	TOL
102210	22 x 10	Lay-In			
1066	6 x 6	Surface			
1088	8 x 8	Surface			
101010	10 x 10	Surface			
101212	12 x 12	Surface			

- Core free area of approximately 50%.
- Construction: Steel core with extruded aluminum borders
- Finish: White

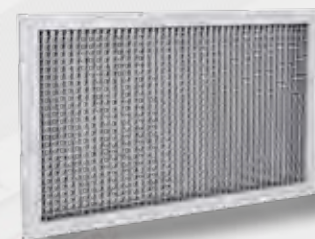


### Model 80-Eggcrate Face Return Grille



Number	Size	Frame	CLE	CBUS	TOL
8066	6 x 6	Surface			
8088	8 x 8	Surface			
801010	10 x 10	Surface			
801010LI	10 x 10	Lay In			
801212	12 x 12	Surface			
801414	14 x 14	Surface			
80224LI	22 x 4	Lay In			
80226LI	22 x 6	Lay In			
802210LI	22 x 10	Lay In			
802222LI	22 x 22	Lay In			
802424	24 x 24	Surface			
802424FF	24 x 24	Lay in			
804622LI	46 x 22	Lay In			

- Construction: 1/2" x 1/2" x 1/2" aluminum grid core, extruded aluminum frames
- Countersunk screw holes with oval head screws. • Finish: White



Indicates stocking location 

## Model: RGS-3 Register for Spiral Duct



Number	Size	Min. duct Diameter	Free Area (ft <sup>2</sup> )	Duct Opening A X B (in)	Weight (lbs.)	CLE	CBUS	TOL
RGS133	13 x 3	6	0.18	12 3/4 x 3	2.4			
RGS173	17 x 3	6	0.25	16 3/4 x 3	3.1			
RGS136	13 x 6	12	0.36	12 3/4 x 6	3.1			
RGS176	17 x 6	12	0.48	16 3/4 x 6	4.2			
RGS216	21 x 6	12	0.60	20 5/8 x 6	5.1			
RGS256	25 x 6	12	0.73	24 5/8 x 6	5.7			
RGS336	33 x 6	12	1	32 1/2 x 6	7.7			



Adjustable double deflection blades and volume damper designed specifically for direct mounting on spiral duct. Rectangular register taps are not required. Register is designed so the flanges always meet flush regardless of duct diameter. Comes with end caps and gasketing material. Manufactured from galvanized sheet metal without the use of welding allowing the register to be used without further surface treatment

## DCD Series-2 Slot Diffuser

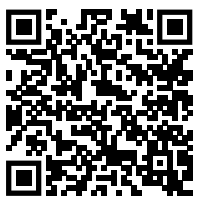


Number	Neck Size	Length/Slot	Slot Width	CLE	CBUS	TOL
DCD246	6"	24" 2 Slot	1"			
DCD486	6"	48" 2 Slot	1"			
DCD488	8"	48" 2 Slot	1"			
DCD4810	10"	48" 2 Slot	1"			



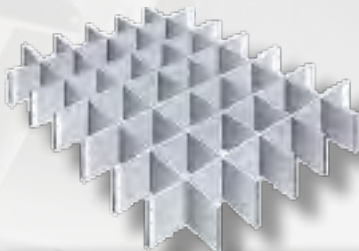
- Aluminum vanes, felt seals are fully adjustable from the face for left, right, or vertical throw.
  - Designed for variable or constant volume systems, heating or cooling.
    - 24 Gauge galvanized steel – Tee Bars are white
    - All exposed surfaces painted flat black

## Model PFRF -Perforated Return Panel



Number	Size	CLE	CBUS	TOL
PFRF2412	24 x 12			
PFRF2424	24 x 24			

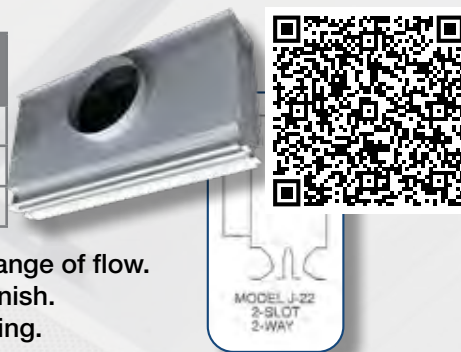
## Eggcrate Sheets



Number	Description	CLE	CBUS	TOL
EGGCRATE2448A	Aluminum 24" x 48"			
EGGCRATE2448P	Plastic 24" x 48"			

## Custom Flow JS Series Slot Diffusers

Number	Neck Size	Length/ Slot	Slot Width	CLE	CBUS	TOL
J22246	6"	24" 2 Slot	1"			
J22248	8"	24" 2 Slot	1"			
J222410	10"	24" 2 Slot	1"			

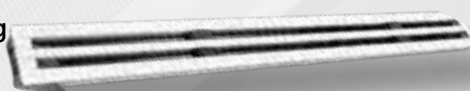


- Fixed vane provides a draftless air pattern over the pattern over the full range of flow.
- 24 gauge galvanized steel – All exposed surfaces have white enamel finish.
- Lower flanges provide tile support as an integral part of the diffuser housing.

## SDS Series- Linear Slot Diffuser

Number	Neck Size	Length/ Slot	Slot Width	CLE	CBUS	TOL
SDS100	NA	48" 2 Slot	1"			
Plenum UPL	8" oval	48" 2 Slot	1"			

- 1800 air pattern adjustable and complete flow rate control with stable horizontal air pattern.
- Type 2 Surface Mounted - concealed mounting
- 1" Slot



## Surface Mount Frame

Number	Length	Description	CLE	CBUS	TOL
TBF48		TB Surface Mount Frame			

- For use with the DCD Series 48" long diffusers.



## Surface Mount Adapter Frame See page 4 for diffusers

Number	Size	CLE	CBUS	TOL
AMF1212	12 x 12		*	
AMF2412	24 x 12		*	
AMF2424	24 x 24		*	
SPF1212	12 x 12			
SPF2424	24 x 24			

\*For Columbus ad MC to part number when ordering  
Items are stocked with mounting clips



## RAC Return Air Canopy

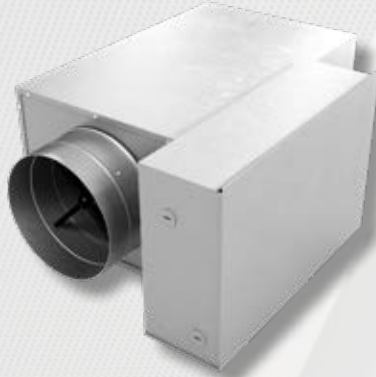
Number	Size	CLE	CBUS	TOL
RAC1224	12 x 24			
RAC2424	24 x 24			

- Fits standard return grille sizes
- Speech privacy between offices
- Reduces visibility into plenum
- Installs easily within T-Bar ceiling



Indicates stocking location

Model SDV Single Duct Terminal Unit - Bare Box



Number	Inlet Size (A)	CLE	CBUS	TOL
SDV56	6"			
SDV58	8"			
SDV510	10"			
SDV512	12"			
SDV514	14"			
SDV516	16"			
SDV52416	24" x 16"			

- Hospital Grade FIBER FREE LINING
- Rectangular discharge opening with slip and drive cleat duct connection.
- Actuator & controls by others • Control Enclosure • 115-24 Volt transformers
- 22 Ga. zinc coated steel housing, mechanically sealed and gasketed, leak resistant construction.

Model SPV Single Duct Terminal Unit w/Pneumatic Controls



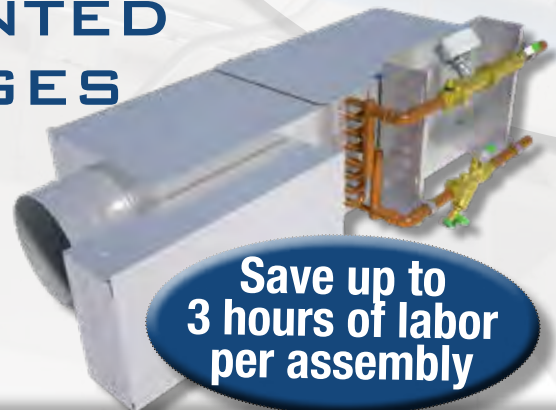
Number	Inlet Size (A)	CLE	CBUS	TOL
SPV86	6"			
SPV88	8"			
SPV810	10"			
SPV812	12"			
SPV814	14"			
SPV816	16"			
SPV82416	24" x 16"			

- Control assembly will be supplied • Hospital Grade FIBER FREE LINING
- 22 Ga. zinc coated steel housing, mechanically sealed and gasketed, leak resistant construction.
- Rectangular discharge opening with slip and drive cleat duct connection.
- Gauge taps are standard. • Pneumatic actuator supplied & mounted by Price

FACTORY MOUNTED  
PIPING PACKAGES  
AVAILABLE



Contact your sales person for details

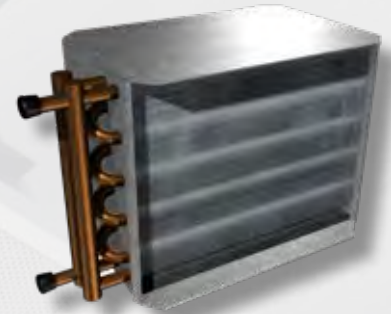


Save up to  
3 hours of labor  
per assembly



## 2 Row Hot Water Coil

Number	VAV Box Size	Imperial Units (inches)		CLE	CBUS	TOL
		B	C			
2RCOIL6	6"	12	8			
2RCOIL8	8"	12	10			
2RCOIL10	10"	14	12 1/2			
2RCOIL12	12"	16	15			
2RCOIL14	14"	20	17 1/2			
2RCOIL16	16"	24	18			
2RCOIL2416	24" x 16"	38	18			



- Performance rated and certified in accordance with the current edition of ARI standard 410.
- Fabricated from 22 ga. galvanized steel, mechanically sealed
- Standard coils supplied with 10 fins per inch.
- Leak resistant construction

## Model CP101 Pneumatic Controller



Number	CLE	CBUS	TOL
CP101			

Provides maximum versatility. Accommodates direct and reverse acting thermostats, and either normally open or normally closed damper positions. Reset start point and span are adjustable. Maintains a constant reset span regardless of minimum and maximum settings.



## PIC Controller



Number	CLE	CBUS	TOL
PIC			
PIC BAC			
PIC LINKER			

- Fast and error-proof RJ-45 thermostat connections
- Five 24 VAC binary outputs field selectable between hot and common switching
- Four fully configurable 0-10 VDC analog outputs for heating/cooling/fan/aux
- Pluggable terminal blocks
- Diagnostic LEDs for BACnet and controller status
- Integrated actuator



## Pneumatic Actuator



Number	CLE	CBUS	TOL
MCP8031			

- Metal body to meet local codes for ceiling plenum applications.
- Actuator body can be rotated 360 degrees for positioning air connection.
- Slotted shaft allows direct connection to VAV damper linkage.
- For use in proportional or two position application.

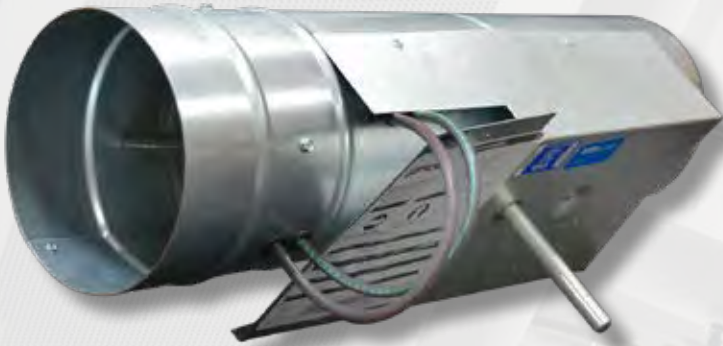


Indicates stocking location

## Model RDV – Round VVT, VAV and Shut Off Damper



Number	Inlet Size	CLE	CBUS	TOL
RDV56	6"			
RDV58	8"			
RDV510	10"			
RDV512	12"			
RDV514	14"			



- Retrofit/Round/VAV
- General exhaust of non-corrosive room air
- Removable flow sensor
- Duct and damper constructed of 22 ga zinc-coated steel, mechanically fastened.
- Stocked without controls or actuators

## Spring Return Round Dampers

- 3 Year Factory Warranty
- 24 Volt Actuator



Number	Inlet Size	CLE	CBUS	TOL
ADC624	6"Ø damper with 24V Motor			
ADC824	8"Ø damper with 24V Motor			
ADC1024	10"Ø damper with 24V Motor			
ADC1224	12"Ø damper with 24V Motor			



The way Spring Dampers work is they have a motor that, when energized by the zoning panel, it closes the damper. When the damper is ready to open, the motor stops powering the damper closed and a spring opens the damper blade back up. Spring Dampers have been used in an "economy" application for many years. The two primary advantages of a Spring Damper are:

1. If the system loses power they "fail" open... but if the system loses power, the equipment isn't going to be running either and therefore will not matter in MOST cases.
2. They only require two wires for operation.

SPIROSafe® SPIRAL PIPE




Number	Size	CLE	CBUS	TOL
3SN120G9	3"			
4SN120G9	4"			
5SN120G9	5"			
6SN120G9	6"			
7SN120G9	7"			
8SC120G9	8"			
9SC120G9	9"			
10SC120G9	10"			
12SC120G9	12"			
14SC120G9	14"			
16SC120G9	16"			
18SC120G9	18"			
20SC120G9	20"			
22SC120G9	22"			
24SC120G9	24"			
26SC120G9	26"			
28SC120G9	28"			
30SC120G9	30"			
32SC120G9	32"			
34SC120G9	34"			
36SC120G9	36"			

Sold in 10' length sections

Old Designation | SR / SRNC



Indicates stocking location 



# SPIRAL PIPE - ELBOWS

## 90° Elbow - for spiral pipe



Number	Outer Diameter	Length	CLE	CBUS	TOL
U3E90	3"	4 1/2			
U4E90	4"	6			
U5E90	5"	7 1/2			
U6E90	6"	9			
U7E90	7"	10 1/2			
U8E90	8"	12			
U9E90	9"	13 1/2			
U10E90	10"	15			
U12E90	12"	18			
U14E90	14"	8 3/4			
U16E90	16"	10			
U18E90	18"	11 1/8			
U20E90	20"	12 3/8			
U22E90	22"	13 5/8			
U24E90	24"	14 7/8			
U26E90	26"	16 1/8			
U28E90	28"	17 3/8			
U30E90	30"	18 5/8			

Old Designation | BSU /BSFU

## 45° Elbow - for spiral pipe



Number	Outer Diameter	Length	CLE	CBUS	TOL
U3E45	3"	1 3/4			
U4E45	4"	2 1/2			
U5E45	5"	3 1/8			
U6E45	6"	3 3/4			
U7E45	7"	4 3/8			
U8E45	8"	5			
U9E45	9"	5 1/8			
U10E45	10"	5 3/4			
U12E45	12"	7			
U14E45	14"	8 3/4			
U16E45	16"	10			
U18E45	18"	11 1/8			
U20E45	20"	12 3/8			
U22E45	22"	13 5/8			
U24E45	24"	14 7/8			
U26E45	26"	16 1/8			
U28E45	28"	17 3/8			
U30E45	30"	18 5/8			

Old Designation | BSU /BSFU



## Coupling - for spiral pipe

Number	Outer Diameter	CLE	CBUS	TOL
U3CD	3"			
U4CD	4"			
U5CD	5"			
U6CD	6"			
U7CD	7"			
U8CD	8"			
U9CD	9"			
U10CD	10"			
U12CD	12"			
U14CD	14"			
U16CD	16"			
U18CD	18"			
U20CD	20"			
U22CD	22"			
U24CD	24"			
U26CD	26"			
U28CD	28"			
U30CD	30"			
U32CD	32"			
U34CD	34"			
U36CD	36"			



Old Designation | NPU

## Connector - for spiral fitting

Number	Outer Diameter	Length (in)	CLE	CBUS	TOL
N3CF	3"	3 5/8			
N4CF	4"	3 5/8			
N5CF	5"	3 5/8			
N6CF	6"	3 5/8			
N7CF	7"	3 5/8			
N8CF	8"	3 5/8			
N9CF	9"	3 5/8			
N10CF	10"	5 1/8			
N12CF	12"	5 1/8			
N14CF	14"	5 1/8			
N16CF	16"	6 5/8			
N18CF	18"	6 5/8			
N20CF	20"	6 5/8			
N22CF	22"	6 5/8			
N24CF	24"	6 5/8			
N26CF	26"	6 3/4			
N28CF	28"	8 5/8			
N30CF	30"	8 5/8			



Old Designation | MF

Indicates stocking location



# SPIRAL PIPE - END CAPS AND TEES

## End Cap- for spiral pipe



Number	Outer Diameter (in)	CLE	CBUS	TOL
U3ED*	3"			
U4ED	4"			
U6ED	6"			
U8ED	8"			
U10ED	10"			
U12ED*	12"			
U14ED*	14"			
U16ED*	16"			
U18ED*	18"			
U20ED*	20"			
U22ED*	22"			
U24ED*	24"			

Old Designation | ESU

\* indicated fabricated. Others are die-stamped

## Wye-branch - for spiral pipe



Number	(1) Outer Diameter (in)	(3) Outer Diameter (in)	(3) Outer Diameter (in)	CLE	CBUS	TOL
U64566	6	6	6			
U84588	8	8	8			
U10451010	10	10	10			
U12451212	12	12	12			

Old Designation | YV45

## Tee - for spiral pipe



Number	(1) Outer Diameter (in)	(3) Outer Diameter (in)	Length (in)	Height (in)	CLE	CBUS	TOL
U4TS4	4"	4"	6"	2 5/8			
U6TS6	6"	6"	9"	4 1/8			
U8TS8	8"	8"	11"	5			
U10TS10	10"	10"	13 3/4"	6			
U12TS12	12"	12"	15 3/8"	7 1/8			

- Assembled tee with die-stamped or fabricated PSU
- 90° Straight tee

Old Designation | TCPU

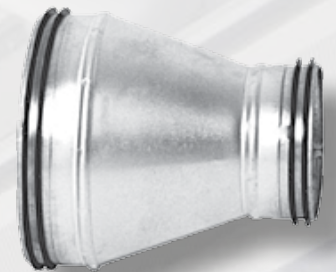
## Reducer - for spiral pipe

Number	(1) O.D. (in)	(2)O.D. (in)	Length (in)	CLE	CBUS	TOL
U4RC3	4"	3"	3/4			
U5RC4	5"	4"	7/8			
U6RC4	6"	4"	1 1/4			
U6RC5	6"	5"	3/4			
U7RC6	7"	6"	1			
U8RC4	8"	4"	2 1/4			
U8RC5	8"	5"	1 5/8			
U8RC6	8"	6"	1 1/4			
U8RC7	8"	7"	3/4			
U9RC8	9"	8"	1 1/8			
U10RC6	10"	6"	2 1/4			
U10RC8	10"	8"	1 1/8			
U10RC9	10"	9"	5/8			
U12RC6	12"	6"	2 1/8			
U12RC8	12"	8"	2 1/8			
U12RC10	12"	10"	1 1/8			
U14RC8*	14"	8"	3 3/8			
U14RC10*	14"	10"	2 3/8			
U14RC12*	14"	12"	1 3/8			
U16RC8	16"	8"	3 7/8			
U16RC10	16"	10"	2 7/8			



Old Designation | RCU

Number	(1) O.D. (in)	(2)O.D. (in)	Length (in)	CLE	CBUS	TOL
U16RC12*	16"	12"	1 7/8			
U16RC14*	16"	14"	7/8			
U18RC12	18"	12"	8 7/8			
U18RC14	18"	14"	6 1/8			
U18RC16	18"	16"	3 5/8			
U20RC14	20"	14"	8 3/4			
U20RC16	20"	16"	6 1/4			
U20RC18	20"	18"	3 3/4			
U22RC16	22"	16"	10			
U22RC18	22"	18"	7 1/4			
U22RC20	22"	20"	4 3/8			
U24RC18	24"	18"	8 7/8			
U24RC20	24"	20"	6			
U24RC22	24"	22"	3 1/4			
U26RC24	26"	24"	3 7/8			
U26RC22	26"	22"	5			
U28RC26	28"	26"	4 3/8			
U30RC28	30"	28"	6 5/8			
U32RC30	32"	30"	-			
U34RC32	34"	32"	-			
U36RC34	36"	34"	-			



Old Designation | RCLU

\* indicated fabricated. Others are die-stamped

Indicates stocking location





# SPIRAL PIPE - SADDLE TAPS

Saddle Taps - for spiral pipe



Old Designation | PSU

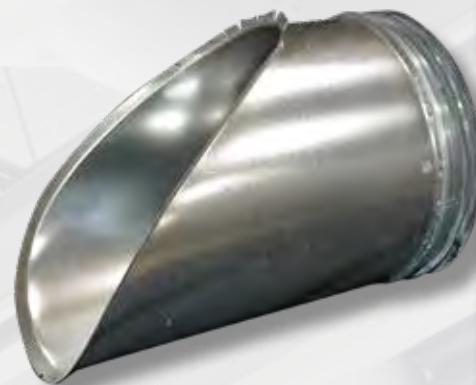
Number	O.D.	(3) O.D.	Radius (in)	Height (in)	For Spiral Pipe O.D.(in)	CLE	CBUS	TOL
U03PS04	4"	3"	1/2	2 3/8	4			
U04PS04	4"	4"	5/8	2 5/8	4			
U04PS06	6"	4"	5/8	3 3/4	6			
U06PS06	6"	6"	7/8	4	6			
U04PS8-7	8/7"	4"	5/8	4 1/2	7-8			
U06PS8-7	8/7"	6"	7/8	4 7/8	7-8			
U08PS08	8"	8"	1	5	8			
U06PS10-9	10/9"	6"	7/8	5 7/8	9-10			
U08PS10-9	10/9"	8"	1	6	9-10			
U10PS10	10"	10"	1	6	10			
U06PS12	12"	6"	7/8	7	12			
U08PS12	12"	8"	1	7 1/8	12			
U10PS12	12"	10"	1	7 1/8	12			
U12PS12	12"	12"	1	7 1/8	12			
U06PS18-14	18-14"	6"	7/8	8 7/8	18-14			
U08PS16-14	16-14"	8"	1	8 7/8	16-14			
U10PS14	14"	10"	1	8	14			
U12PS14	14"	12"	1	8 1/2	14			
U14PS14	14"	14"	1	8 1/2	14			
U12PS16	16"	12"	1	8 7/8	16			
U14PS16	16"	14"	1	8 7/8	16			
U16PS16	16"	16"	1	8 7/8	16			
U14PS18	18"	14"	1	9 7/8	18			
U08PS20-18	20-18"	8"	1	9 7/8	20-18			

## Saddle Taps (CONT'D)

Number	O.D.	(3) O.D.	Radius (in)	Height (in)	For Spiral Pipe O.D.(in)	CLE	CBUS	TOL
U10PS20-16	20-16"	10"	5/8	9 1/2	20-16			
U14PS20	20"	14"	1	9 7/8	20			
U16PS20-18	20-18"	16"	0	9 7/8	20-18			
U20PS16	20"	16"	1	11	20			
U16PS20-18	20-18"	16"	0	9 7/8	20-18			
U18PS20	20"	18"	0	9 7/8	20			
U20PS20	20"	20"	1	9 7/8	20			
U12PS22-18	22-18"	12"	1	13 3/4	22-18			
U10PS24-22	24"	10"	1	8 7/8	22-24			
U14PS24-22	24-22"	14"	0	12	24-22			
U16PS24-22	24-22"	16"	1	13	24-22			
U18PS24	24"	18"	0	11 3/4	24			
U20PS24	24"	20"	0	11 3/4	24			
U22PS24	24"	22"	0	11 3/4	24			
U24PS24	24"	24"	0	11 3/4	24			

## 45° Taps (for spiral pipe) - Die stamped with radiused entry

Number	O. D.	O. D. (3)	Height (in)	For Spiral Pipe O.D.(in)	CLE	CBUS	TOL
U03PV0345	3"	3"	2 3/8	3			
U04PV0445	4"	4"	2 5/8	4			
U04PV0645	6"	4"	3 3/4	6			
U06PV0645	6"	6"	4	6			
U04PV0845	8"	4"	4 1/2	7-8			
U06PV0845	8"	6"	4 7/8	7-8			
U08PV0845	8"	8"	5	8			
U06PV1045	10"	6"	5 7/8	9-10			
U10PV1045	10"	10"	6	9-10			
U08PV1245	12"	8"	7 1/8	12			
U12PV1245	12"	12"	7 1/8	12			
U08PV1445	14"	8"	8	14			
U14PV1445	14"	14"	8 1/2	14			



Old Designation | PSVF

Indicates stocking location





# SPIRAL PIPE - TAKE-OFFS/BALANCING DAMPERS



## Starting Collar Take Off

Old Designation | ILU



Number	Outer Diameter (in)	CLE	CBUS	TOL
U3PT	3"			
U18PT	18"			
U20PT	20"			
U22PT	22"			
U24PT	24"			
U26PT	26"			
U28PT	28"			
U30PT	30"			

- To be installed on flat side, i.e. rectangular duct or plenum.
- Take-off/starting collar

## Bellmouth Take-Off

Old Designation | ILRU



Number	Outer Diameter (in)	Radius = Length (in)	CLE	CBUS	TOL
U4PR	4"	5/8			
U6PR	6"	7/8			
U8PR	8"	1			
U10PR	10"	1			
U12PR	12"	1			
U14PR	14"	1			
U16PR	16"	1			

- To be installed on flat side, i.e. rectangular duct or plenum.
- Radiused bellmouth take-off

## Balancing Damper w/ Full Blade

Old Designation | DSU



Number	Outer Diameter (in)	Length (in)	CLE	CBUS	TOL
U4DS	4"	4			
U6DS	6"	4			
U8DS	8"	4			
U10DS	10"	4			
U12DS	12"	4			
U14DS	14"	4			

- 2" sheet metal insulation stand off
- Integral shaft-blade assembly



## Pipe 60" Lengths

Number	Size	CLE	CBUS	TOL
SL60426	4"			
SL60626	6"			
SL60826	8"			
SL601026	10"			
SL601226	12"			
SL601426	14"			
SL601626	16"			



- Self-starting, knurled sufficiently so that the crimp "falls in" and once assembled completes a rigid, leak proof connection
- 60" Length – 26 gauge
- No tools required.

We also stock 18" Snaplock pipe in 2 ft sections contact us if you need more information

## 90° 26 Gauge Adjustable Elbow

Number	Size	CLE	CBUS	TOL
90326	3"			
90426	4"			
90526	5"			
90626	6"			
90826	8"			
901026	10"			
901226	12"			
901426	14"			
901626	16"			
901826	18"			



## Flat Collar-Crimped

Number	Size	CLE	CBUS	TOL
974	4"			
975	5"			
976	6"			
977	7"			
978	8"			
9710	10"			
9712	12"			
9714	14"			
9716	16"			
9718	18"			



Indicates stocking location



## Round End Cap



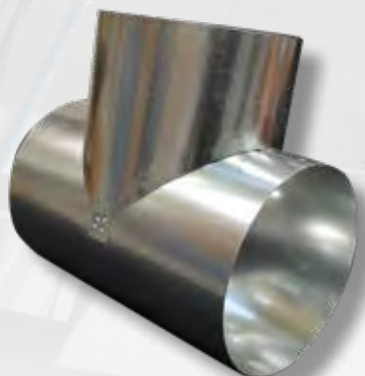
Number	Size	CLE	CBUS	TOL
55104	4"			
55105	5"			
55106	6"			
55107	7"			
55108	8"			
551010	10"			
551012	12"			
551014	14"			
551016	16"			

## Tapered Reducer



Number	Size	CLE	CBUS	TOL
5843	4 x 3			
5854	5 x 4			
5864	6 x 4			
5865	6 x 5			
5876	7 x 6			
5886	8 x 6			
5587	8 x 7			
58106	10 x 6			
58108	10 x 8			
58109	10 x 9			
58128	12 x 8			
581210	12 x 10			
581410	14 x 10			
581412	14 x 12			
581614	16 x 14			
581816	18 x 16			

## 26 Gauge Tee Joint



Number	Size	CLE	CBUS	TOL
546	6 x 6 x 6			
548	8 x 8 x 8			
5410	10 x 10 x 10			
5412	12 x 12 x 12			
5414	14 x 14 x 14			
5416	16 x 16 x 16			
5418	18 x 18 x 18			

## One Quad Damper

Number	Size	CLE	CBUS	TOL
444	4"			
445	5"			
446	6"			
447	7"			



## Two Quad Damper

Number	Size	CLE	CBUS	TOL
448	8"			
4410	10"			
4412	12"			
4414	14"			
4416	16"			



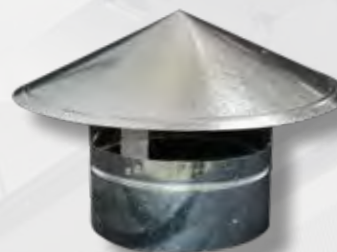
## Adjustable Take Off

Number	Size	CLE	CBUS	TOL
63A6	6"			
63A8	8"			
63A10	10"			
63A12	12"			
63A14	14"			



## Chimney Cap

Number	Size	CLE	CBUS	TOL
996	6"			
998	8"			
9910	10"			
9912	12"			



## Saddle Tap w/dampers (adhesive gasket)

Number	Size	Description	CLE	CBUS	TOL
ATDRP6	6"	6" Tap w/damper on 8, 10, 12			
ATDRP8	8"	8" Tap w/damper on 10, 12, 14			
ATDRP10	10"	10" Tap w/damper on 12, 14, 16, 18			
ATDRP12	12"	12" Tap w/damper on 16, 18			
ATDRP14	14"	14" Tap w/damper on 16, 18			



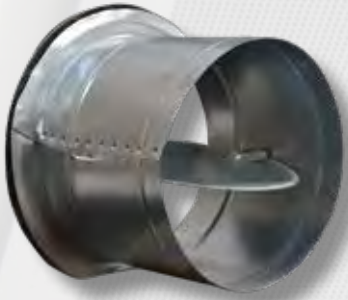
Indicates stocking location





# SHEET METAL FITTINGS

## Model #FLD SOG Take Off w/Damper



Number	Size	CLE	CBUS	TOL
FLD6SOG	6"			
FLD7SOG	7"			
FLD8SOG	8"			
FLD9SOG	9"			
FLD10SOG	10"			
FLD12SOG	12"			
FLD14SOG	14"			

- 26 ga, G-90 galvanized steel prepunched. • 1 1/2" wide flange.
- Adhesive neoprene gasket with peel back tape

## Model #SLD BO3 Wal-Mart Damper



Number	Size	CLE	CBUS	TOL
SLDBO36	6"			
SLDBO38	8"			
SLDBO310	10"			
SLDBO312	12"			
SLDBO314	14"			

• 26 ga, 9.25"long, only one end crimped

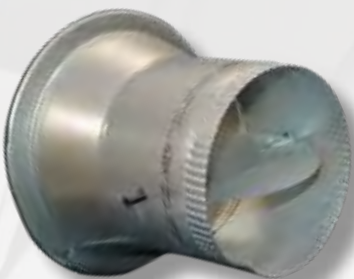
## Model #STOD BO2 Side Take off with Damper



Number	Size	CLE	CBUS	TOL
STO-6	6"			
STO-8	8"			
STO-10	10"			
STO-12	12"			
STO-14	14"			
STO-16	16"			

- 26 ga,G-90 galvanized steel prepunched. • 1" wide flange.
- Adhesive gasket • Two inch build out for damper handle.

## Conical Take Off w/Damper



Number	Size	CLE	CBUS	TOL
SF0775	4"			
SF0780	5"			
SF0785	6"			
SF0790	7"			
SF0795	8"			
SF0800	9"			
SF0805	10"			
SF0810	12"			
SF0815	14"			

## Storm Collar

Number	Size	CLE	CBUS	TOL
996	3"			
998	4"			
9910	5"			
9912	6"			
1423	7"			
1424	8"			
1425	10"			
1426	12"			
1427	14"			



## Model #1071T Tall Cone Flashing

Number	Size	CLE	CBUS	TOL
1414	4"			
1415	5"			
1416	6"			
1417	7"			
1418	8"			
14110	10"			
14112	12"			
14114	14"			



## Blast Gates

Number	Size	CLE	CBUS	TOL
C1022	2"			
C1032	3"			
C1042	4"			
C1052	5"			
C1062	6"			
C1072	7"			
C1082	8"			
C1092	9"			
C1102	10"			
C1122	12"			



- Set screw to firmly hold blade for volume control
- Cast aluminum with galvanized steel slide gate
- Full cut off

## Model #FLDE-SOG-90 Take off w/ Damper & 90° Scoop

Number	Size	CLE	CBUS	TOL
FLDES0906	6"			
FLDES0908	8"			
FLDES0910	10"			
FLDES0912	12"			
FLDES0914	14"			
FLDES0916	16"			
FLDES0918	18"			

- Adhesive gasket
- 1 1/2" wide flange.



Indicates stocking location





## Model #STR Square to Round Adapters w/Open Corners

Number	Size	CLE	CBUS	TOL
STR666	6 x 6 x 6			
STR886	8 x 8 x 6			
STR996	9 x 9 x 6			
STR12126	12 x 12 x 6			
STR888	8 x 8 x 8			
STR998	9 x 9 x 8			
STR10106	10X10X6			
STR10108	10 x 10 x 8			
STR101010	10 x 10 x 10			
STR12128	12 x 12 x 8			
STR121210	12 x 12 x 10			
STR121212	12 x 12 x 12			
STR151512	15 x 15 x 12			
STR151514	15 x 15 x 14			
STR18186	18 x 18 x 6			
STR18188	18 x 18 x 8			

Number	Size	CLE	CBUS	TOL
STR181810	18 x 18 x 10			
STR181812	18 x 18 x 12			
STR181814	18 x 18 x 14			
STR181816	18 x 18 x 16			
STR181818	18 x 18 x 18			
STR22106	22 x 10 x 6			
STR22108	22 x 10 x 8			
STR221010	22 x 10 x 10			
STR22226	22 x 22 x 6			
STR22228	22 x 22 x 8			
STR222210	22 x 22 x 10			
STR222212	22 x 22 x 12			
STR222214	22 x 22 x 14			
STR222216	22 x 22 x 16			
STR222218	22 x 22 x 18			

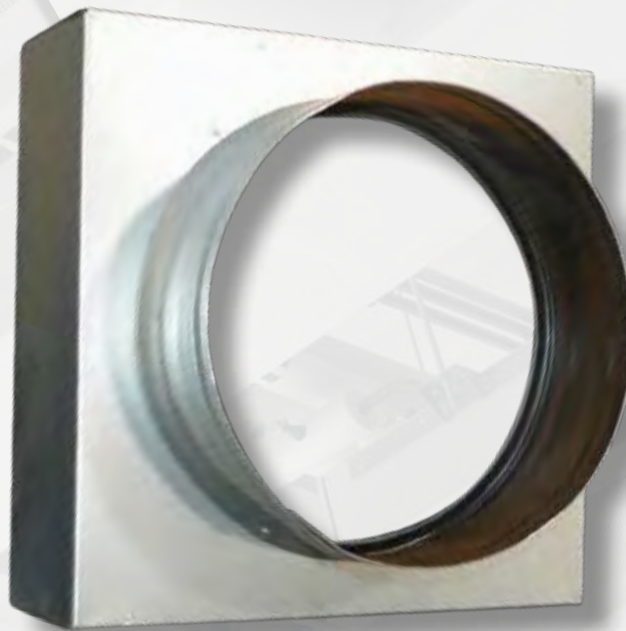


Interior of round adapter is painted black

## Model #F3SC Square to Round Adapters w/Closed Corners

Number	Size	CLE	CBUS	TOL
STR665	6 x 6 x 5			
STR666	6 x 6 x 6			
STR886	8 x 8 x 6			
STR888	8 x 8 x 8			
STR10106	10 x 10 x 6			
STR10108	10 x 10 x 8			
STR101010	10 x 10 x 10			
STR12126	12 x 12 x 6			
STR12128	12 x 12 x 8			
STR121210	12 x 12 x 10			
STR121212	12 x 12 x 12			
STR	14 x 14 x 14			

Number	Size	CLE	CBUS	TOL
STR22106	22 x 10 x 6			
STR22108	22 x 10 x 8			
STR221010	22 x 10 x 10			
STR22226	22 x 22 x 6			
STR22228	22 x 22 x 8			
STR222210	22 x 22 x 10			
STR222212	22 x 22 x 12			
STR222214	22 x 22 x 14			
STR222216	22 x 22 x 16			
STR222218	22 x 22 x 18			



Interior of round adapter is painted black

Indicates stocking location





# HANGERS & ACCESSORIES

## Loop End Fixing (10 per bag)



Number	Size	Cable length	CLE	CBUS	TOL
XP1-LG-10FT	No. 1 Safe Working Load 22 lbs. Loop	10 ft.			
XP2-LG-5FT	No. 2 Safe Working Load 100 lbs Loop	5 ft.			
XP2-LG-10FT		10 ft.			
XP2-LG-15FT		15 ft.			
XP2-LG-20FT		20 ft.			
XP2-LG-30FT		30 ft.			
HF3-LG-5FT	No. 3 Safe Working Load 200 lbs. Loop	5 ft.			
HF3-LG-10FT		10 ft.			
HF3-LG-15FT		15 ft.			
HF3-LG-30FT		30 ft.			

## Stud End Fixing (10 per bag)



Number	Size	Cable length	CLE	CBUS	TOL
HF1-SQG-10FT	No. 1 Safe Working Load 22 lbs. Stud	10 ft.			
HF3-SQG-5FT	No. 3 Safe Working Load 200 lbs. Stud	5 ft.			

## Trapeze #2 / Duct Trapeze (10 per bag)



Number	Description	Cable length	CLE	CBUS	TOL
DT2-LG-5FT	#2 Duct Trapeze Loop End	5 ft.			
DT2-LG-10FT	#2 Duct Trapeze Loop End	10 Ft.			
DT2-LG-15FT	#2 Duct Trapeze Loop End	15 Ft.			

## 90° Eyelet with Express Hanger (10 per bag)



Number	Description	Cable length	CLE	CBUS	TOL
XP2-EY90QG-5FT	90° Eyelet Cable Express Hanger #2	5 Ft.			
XP2-EY90QG-10FT	90° Eyelet Cable Express Hanger #2	10 Ft.			
XP2-EY90QG-15FT	90° Eyelet Cable Express Hanger #2	15 Ft.			

## 90° Eyelet with Duct Trapeze Hanger



Number	Description	Cable length	CLE	CBUS	TOL
DT2-EY90QG-10FT	90° Eyelet Cable Duct Trapeze Hanger #2	10 Ft.			
DT2-EY90QG-15FT	90° Eyelet Cable Duct Trapeze Hanger #2	15 Ft.			



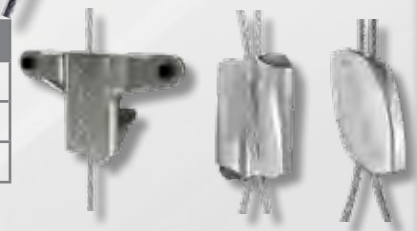
## UniGrip w/Loop End (10 per bag)

Number	Description	Cable length	CLE	CBUS	TOL
UG2-CN-LG-10FT	UniGrip Hanger Loop End	10 Ft.			
UG3-CN-LG-15FT	UniGrip Hanger Loop End	15 Ft.			



## Fasteners (10 per bag)

Number	Description	CLE	CBUS	TOL
DT2-ACC	Duct Trapeeze Lock			
XP2-10BB	Express Lock #2			
HF2-10BB	Standard Lock			



## Bulk Wire Rope-Galvanized

Number	Description	CLE	CBUS	TOL
ROP-2MM-500FT-Reel	500' Spool #2 Cable			



## Cable Cutting Tool

Number	Description	CLE	CBUS	TOL
Cutter-Gripple	Cable Cutting Tool			



## Duct Sealant

Number	Description	CLE	CBUS	TOL
FRSUPERSEAL	Water Base Duct Sealer			

- Fire resistive, water based, indoor/outdoor
- Drying Time: Set to Touch: 1 hour - Dry Thoroughly: 16 hours
- Color: Gray



## Draw bands & Tensioning Tool

Number	Description	CLE	CBUS	TOL
T150LL	36" Natural color ties			
T150XL	48" Gray color ties			
T150	Tension Tool			



T150LL & T150XL are packaged (50) per bag

Indicates stocking location



OHIO'S PREMIER COMMERCIAL HVAC DISTRIBUTION SOURCE



## Single Wall Pipe Access Door



Number	Size	CLE	CBUS	TOL
RAD1066	10 x 6 x 6			
RAD1068	10 x 6 x 8			
RAD10610	10 x 6 x 10			
RAD10612	10 x 6 x 12			
RAD10614	10 x 6 x 14			

- Formed 20 ga. metal plates • Polyfoam insulation • Steel bolt
- Steel compression springs • Closed cell neoprene gasket

## Drywall Access Door



Number	Size	CLE	CBUS	TOL
9TM1010	10 x 10			
9TM1212	12 x 12			
9TM1818	18 x 18			
9TM2424	24 x 24			

- Door: 14 Ga. cold-rolled steel • Frame: 16 Ga. cold-rolled steel with 1" flange
- Concealed spring hinge (opens to 175o) • Screwdriver cam latch
- Phosphate dipped & prime coated finish • Dovetail

## Framed Duct Access Doors - Cammed



Number	Size	CLE	CBUS	TOL
FDC66	6 x 6			
FDC88	8 x 8			
FDC1010	10 x 10			
FDC1212	12 x 12			
FDC1414	14 x 14			
FDC1616	16 x 6			
FDC1818	18 x 18			
FDC2424	24 x 24			

- Spot-welds at each corner for increased strength
- Contains a high density, closed cell gasket for a good seal

## Framed Duct Access Doors - Hinged



Number	Size	CLE	CBUS	TOL
FDH66	6 x 6			
FDH88	8 x 8			
FDH1414	14 x 14			
FDH1818	18 x 18			

- Spot-welds at each corner for increased strength
- Contains a high density, closed cell gasket for a good seal

### Model UPC #50-Uninsulated Flex

Number	Size	CLE	CBUS	TOL
UPC503	3"			
UPC504	4"			
UPC505	5"			
UPC506	6"			
UPC508	8"			
UPC5010	10"			
UPC5012	12"			
UPC5014	14"			
UPC5016	16"			



- U.L. 181, Class 1 Air Connector, constructed of a triple lamination of metalized polyester, aluminum foil and polyester, encapsulating a steel wire helix

### Model UPC #70-Insulated Flex

Number	Size	CLE	CBUS	TOL
UPC0704	4"			
UPC0705	5"			
UPC0706	6"			
UPC0708	8"			
UPC07010	10"			
UPC07012	12"			
UPC07014	14"			
UPC07016	16"			
UPC07018	18"			
UPC07020	20"			



- Durable, all-purpose product UPC 70 is double ply, gray polyester vapor barrier w/spiral reinforcements.
- R-Value =4.2\*

### Model UPC #30-Insulated Flex

Number	Size	CLE	CBUS	TOL
UPC0304	4"			
UPC0306	6"			
UPC0308	8"			
UPC03010	10"			
UPC03012	12"			
UPC03014	14"			
UPC03016	16"			



- D U.L. 181, Class 1 Air Connector, constructed of a double lamination of metalized polyester, aluminum foil and polyester, encapsulating a steel wire helix.
- R-Value =4.2\*

\*R-Values are classified by Underwriters Laboratories, Inc. in accordance with the ADC flexible Duct Performance and Installation Standards (1991) using ASTM C - 518 at installed wall thickness on flat insulation only.

Rated Positive pressure	10" w.g. per U.L. 181
Recommended Operating Pressure	6" w.g. pos., all dia.; 3/4" neg., all dia.
Maximum Velocity	5,000 FPM
Flame Spread/Smoke Developed	Less than 25/Less than 50

Indicates stocking location 



# FLEXIBLE DUCT

## Model UPC #10-Duct Sleeve



- Thick fiberglass insulation for thermal efficiency
- Reinforced metalized vapor barrier jacket
- 5' sections eliminate in shop & jobsite cutting
- R-Value =4.2\*

Number	Size	CLE	CBUS	TOL
UPC0106	6"			
UPC0108	8"			
UPC01010	10"			
UPC01012	12"			
UPC01014	14"			

Operating Temperature	-20° to 250° F
Flame Spread/Smoke Developed	> 25/ > than 50

## Type 3 NI (formerly NI-35) Non-Insulated Flex

FLEXMASTER U.S.A.  
A FASTERDUCT COMPANY



Number	Size	CLE	CBUS	TOL
NI354	4"			
NI355	5"			
NI356	6"			
NI357	7"			
NI358	8"			
NI359	9"			
NI3510	10"			
NI3512	12"			
NI3514	14"			

- UL 181, Class 1 non-insulated connector for application in low to high pressure systems. Solid mechanical union of trilaminated aluminum foil, fiberglass, and aluminized polyester liner and corrosion resistant galvanized steel helix create an extraordinary durable seam.
- Working Pressure: -5" w.g. (-1" w.g. 18" and above) to + 16" w.g. • Min Burst Pressure: 2 ½ X working pressure
- Rated Velocity: 5,500 fpm • Operating Temperature: -20° to 250° F • Standard Length: 25 feet

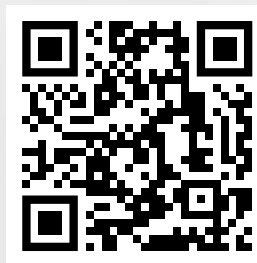
## Thermafex Model KM



Number	Size	CLE	CBUS	TOL
KM4	4"			
KM6	6"			
KM8	8"			
KM10	10"			
KM12	12"			
KM14	14"			
KM16	16"			

- Thermally insulated, fully lined, UL 181 Class 1 flexible air duct with metallized film laminate outer vapor barrier
- R-Value = 6.0

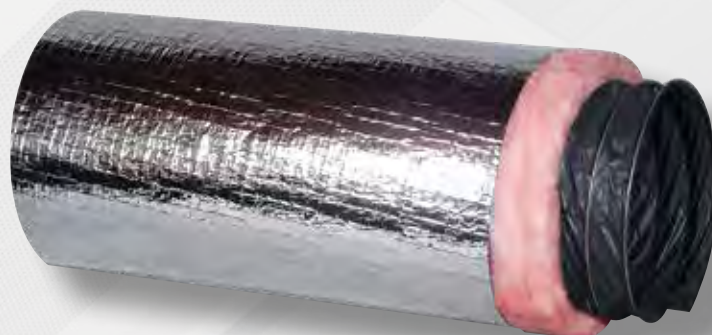
Rated Pressure	Positive = 10.0 " (4-16 in. ID), 6"0 (18-20 in. ID) Negative = 0.5" (4-20 in. ID)
Maximum Velocity	5,000 FPM
Flame Spread/Smoke Developed	Less than 25/Less than 50



## Type 1M Insulated Flex

Number	Size	CLE	CBUS	TOL
1MR4.24	4"			
1MR4.26	6"			
1MR4.28	8"			
1MR4.210	10"			
1MR4.212	12"			
1MR4.214	14"			

- Acoustical Attenuation Benefits
- Working Pressure: -4" w.g to +6 w.g.
- Minimum Burst Pressure: 2 ½ times working pressure
- Rated Velocity: 4000 fpm
- Operating Temperature: -20 to 250° F
- Standard Length: 25 Feet



## Type 3B Insulated Flex

Number	Size	CLE	CBUS	TOL
3B4	4"			
3B5	5"			
3B6	6"			
3B7	7"			
3B8	8"			
3B9	9"			
3B10	10"			
3B12	12"			
3B14	14"			

- Working Pressure: -5" w.g to +16 w.g.
- Minimum Burst Pressure: 2 ½ times working pressure
- Rated Velocity: 5500 fpm
- Operating Temperature: -20 to 250° F
- Standard Length: 25 Feet

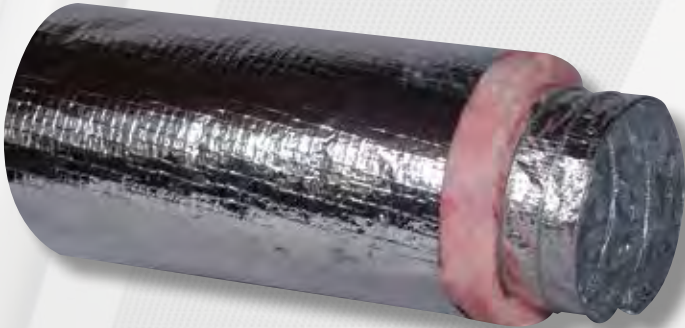


Both Type 1M & Type 3 B Insulated Flex are UL 181, Class 1 insulated air duct, solid mechanical union of polyethylene inner liner and corrosion resistant galvanized steel helix create an extraordinary durable seam. Thermally insulated to an R Value of 4.2 with a reinforced metalized protective vapor barrier to suit any application.

Indicates stocking location 



## Type 1M Low Pressure Insulated Flex



Number	Size	CLE	CBUS	TOL
1MR64	4"			
1MR65	5"			
1MR66	6"			
1MR67	7"			
1MR68	8"			
1MR69	9"			
1MR610	10"			
1MR612	12"			
1MR614	14"			
1MR616	16"			
1MR618	18"			

- Working Pressure: -4" w.g. (-1" w.g. 18" and above) to + 6" w.g.
- Minimum Burst Pressure: 2 ½ times working pressure
- Rated Velocity: 4,000 fpm
- Operating Temperature: -20 to 250° F
- Standard Length: 25 Feet

## Type 3M Hi Pressure Insulated Flex



Number	Size	CLE	CBUS	TOL
3MR64	4"			
3MR65	5"			
3MR66	6"			
3MR67	7"			
3MR68	8"			
3MR69	9"			
3MR610	10"			
3MR612	12"			
3MR614	14"			
3MR616	16"			
3MR618	18"			

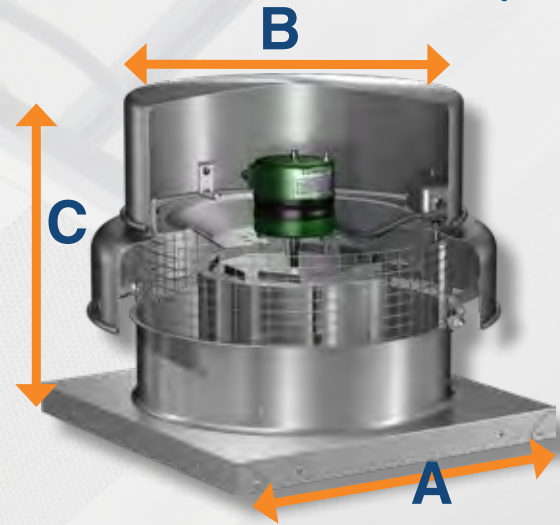
- Working Pressure: -5" w.g. (-1" w.g. 18" and above) to + 16" w.g.
- Minimum Burst Pressure: 2 ½ times working pressure
- Rated Velocity: 5,500 fpm
- Operating Temperature: -20 to 250o Fahrenheit
- Standard Length: 25 Feet

Both Type 5M & Type 3M Pressure Insulated Flex UL 181, Class 1 insulated air duct for application in low to high pressure systems. Solid mechanical union of trilaminated aluminum foil, fiberglass, and aluminized polyester liner and corrosion resistant galvanized steel helix create an extraordinary durable seam. Thermally insulated to an R Value of 4.2 with a reinforced metalized protective vapor barrier to suit any application

## Adjustable G Roof Exhaust Direct Drive Fan



Number	A	B	C	CLE	CBUS	TOL
G095VG	17	21 3/4	14 5/8			
CFM 125 thru 1031 @ .25" S.P. adjustable through Vari-Green						
G103VG	19	24 3/8	23 3/4			
CFM 250 thru 1510 @ .25" S.P. adjustable through Vari-Green						
G123VG	19	24 3/8	23 3/4			
CFM 455 thru 2215 @ .25" S.P. adjustable through Vari-Green						
G133VG	19	28 3/8	23 3/4			
CFM 550 thru 2610 @ .25" S.P. adjustable through Vari-Green						
G143VG	22	28 3/8	23 3/4			
CFM 550 thru 3050 @ .25" S.P. adjustable through Vari-Green						



- Aluminum Housing
- Non-overloading backward inclined wheel
- Aluminum curb cap with pre-punched mounting holes
- Integral hood bead for reinforced strength
- Galvanized birdscreen
- EC motor isolated on shock mounts
- Nema-1 disconnect

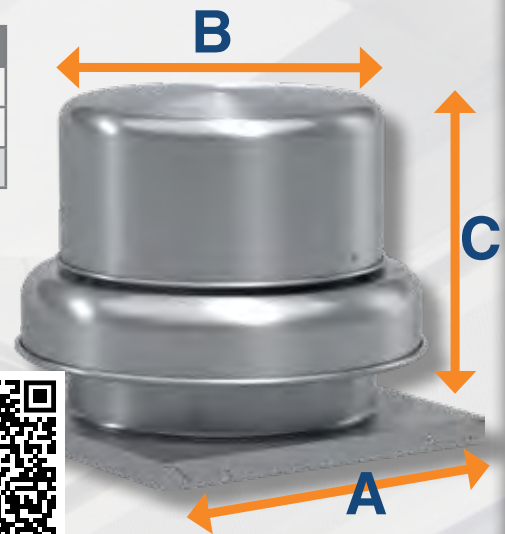


## Model #GB Roof Exhaust Belt Drive Fan



Number	A	B	C	CLE	CBUS	TOL
GB0814XR3	19	24 3/8	23 3/4			
GB0914XR3	19	24 3/8	23 3/4			

GB capacities range from 4704-9881 cfm and FRPM range from 490-610



- Aluminum Housing
- Non-overloading backward inclined wheel
- Galvanized birdscreen
- Integral hood bead for reinforced strength
- Double studded isolators for true vibration isolation
- Motor out of air stream
- Adjustable motor pulleys allow for final system balancing
- Nema-1 disconnect



Number	Roof Opening (in)	Roof Curb (in)	Damper (in)	Min/Max RPM	Sones @ 0 in.
GB0814XR3	14 1/2 x 14 1/2	19	12	630	2.4
				1710	12.5
GB0914XR3	14 1/2 x 14 1/2	19	12	660	3.1
				1710	13.4

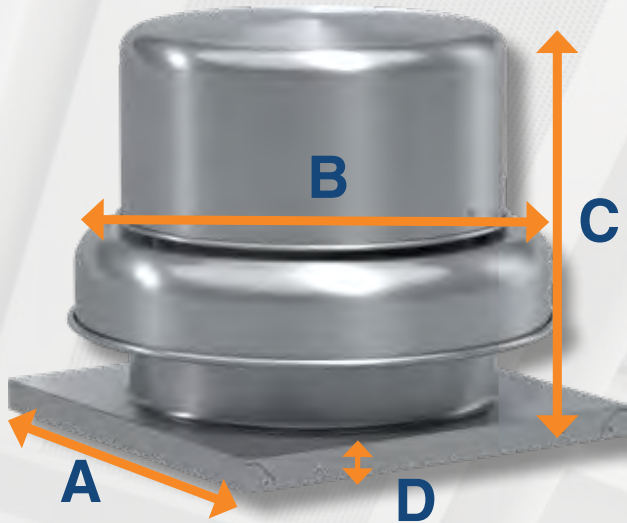
Indicates stocking location



## Downblast Exhaust Roof Belt Drive Fan



Number	A	B	C	D	CLE	CBUS	TOL
GB1605122XQD	22"	28.375"	23.75"	1.75"			
GB capacities range from 4704-9881 cfm and FRPM range from 490-610							

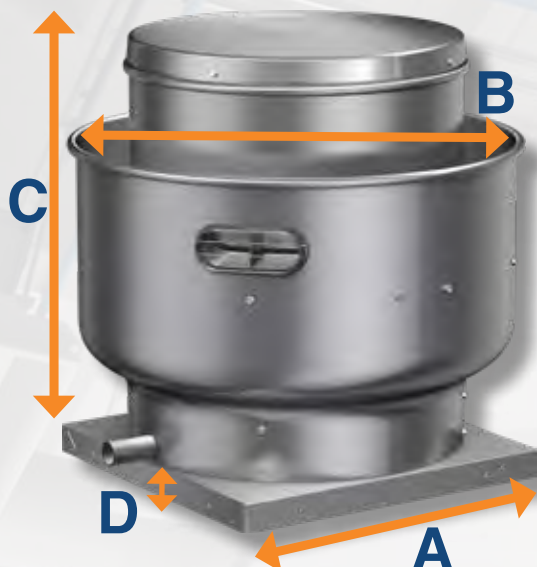


- 22 x 22 inch base with prepunched mounting holes for easy attachment to roof curb
- Variable pitch adjustable motor pulley to optimize fan performance
- 18.5 x 18.5 inch recommended roof opening
- Centrifugal wheel provides high-efficiency and minimal sound
- True vibration isolation supports the motor and wheel for long life and quiet operation
- One-piece aluminum curb cap provides a weather-tight fit
- Galvanized birdscreen protects the fan discharge from birds and small objects
- Fully rolled windband bead for increased stability and easy transport
- Positive motor cooling with fresh air results in maximum motor life
- Permanent embossed aluminum nameplate for exact model and serial number identification
- Suitable for High Wind applications
- Motor, belt and pulleys shipped loose for field assembly

## Upblast Exhaust Direct Drive Fan



Number	A	B	C	D	CLE	CBUS	TOL
CUE140VG	22"	28.875"	29.75"	1.75"			
CUE capacities range from 851 to 2,808 cfm and FRPM range from 590-1550							



- 22 x 22 inch base with prepunched mounting holes for easy attachment to roof curb
- Energy-efficient, speed controllable, Vari-green® motor
- Roof or wall mountable
- 115V / 1Ph, 60Hz
- 3/4 HP direct drive motor
- Centrifugal wheel provides high-efficiency and minimal sound
- One-piece aluminum windband with rolled bead
- Cooling fins located on top of fan wheel draw outside air through a large breather tube directly into the motor compartment extending motor life
- Permanent embossed aluminum nameplate for exact model and serial number identification



# Replacement *Roof Exhaust Fans*

Does your roof exhaust fan need an upgrade or replacement? Regardless of make or model we can replace your fan with a trusted Greenheck® exhaust fan.



- We can replace fans by any manufacturer including:
  - Cook, Penn Barry, Acme, Jenn Air
- Contact us! We only need:
  - Curb outside dimension
  - Voltage
  - Horsepower
- We can replace any fan with Greenheck variable speed Vari-Green technology



**Most fans available in 1,3,5,10 day shipping programs**

Indicates stocking location 

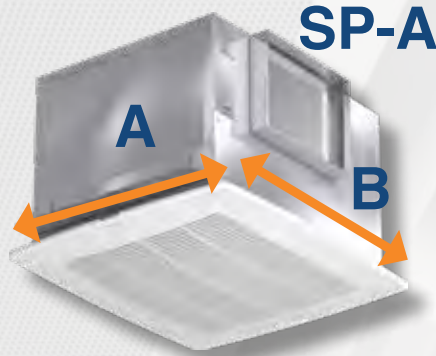
CLEVELAND / COLUMBUS / TOLEDO

OHIO'S PREMIER COMMERCIAL HVAC DISTRIBUTION SOURCE



# CEILING EXHAUST FANS

## Model #SP Ceiling Exhaust Fan



- Designed for applications where low sound levels are critical.
- Ideal selections for offices, conference rooms and restrooms.
- Their low sound levels are achieved through quiet running forward curved wheels.
- All models UL listed/licensed AMCA Certified Ratings Seal for air and sound performance.
- Units are stocked with 115/60/1 motors
- Plug in disconnect switch included w/integral backdraft damper

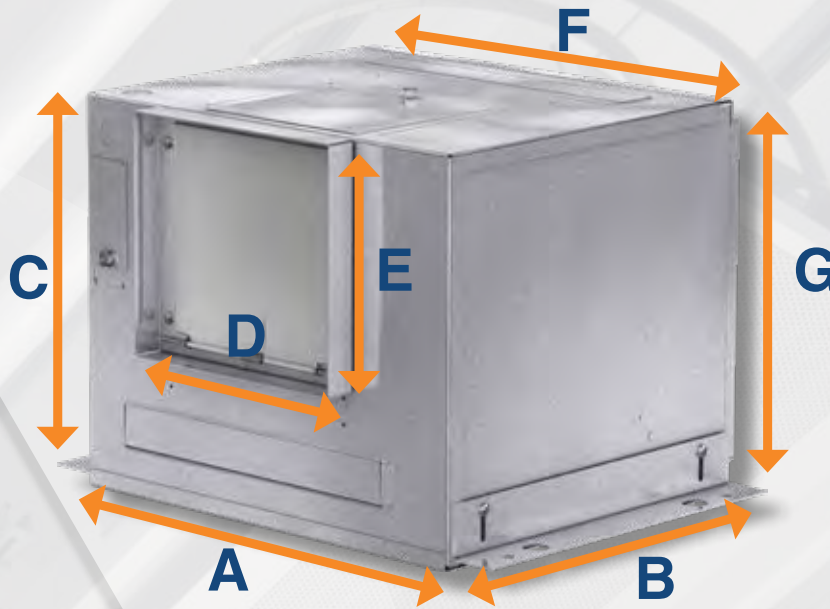
### Dimensional Data (in inches)

Number	A	B	C	Outlet		CLE	CBUS	TOL
				D	E			
SPB90	13 7/8	11 1/2	7	6				
SPB110	13 7/8	11 1/2	7	6 dia.				
SPB150	13 7/8	11 1/2	7	6 dia.				
SPB200	13 7/8	11 1/2	7	6 dia.				
SPA110	13 1/4	10 5/8	9	8"	6"			
SPA250	14	11 7/8	11 1/4	8	8			
SPA290	14	11 7/8	11 1/4	8	8			
SPA390	14	11 7/8	11 1/4	8	8			
SPA410	18	14 3/8	14 1/2	8	8			
SPA510	18	14 3/8	14 1/2	8	8			
SPA710	18	14 3/8	14 1/2	10	8			

### Performance Data

Number	RPM	AMPS	WATTS	Sones @ 0 in.	Performance in inches WG									
					0.00	.100	.125	.250	.375	.500	.625	.750	1.00	
SPB90	700	0.18	21.1	1.0	104	92	89	72	57					
SPB110	950	1.14	80	2.0	133	114	110	97	95	94	91	85	50	
SPB150	1050	1.70	129	3.0	160	156	155	154	152	149	147	138	92	
SPB200	1100	2.20	173	4.4	197	195	194	191	187	184	181	166	128	
SPA110	950	0.16	19.4	0.3	130	119	115	98						
SPA250	1000	0.56	67	2.5	294	274	271	250	230	201	147	92		
SPA290	1050	0.72	81	3.2	315	293	287	257	231	207	175	124		
SPA390	1350	1.34	135	5.4	410	395	391	368	345	325	307	279		
SPA410	1000	1.74	121	4.1	443	413	405	351	305					
SPA510	1070	3.30	224	6.0	557	512	501	439	392	325				
SPA710	1080	4.40	285	7.4	752	714	701	653	588	485	320			

Model #CSP Cabinet Exhaust Fan



- Model CSP inline cabinet fans are designed for clean air applications where low sound levels are desired.
- They can be used for supply, exhaust or return applications within a duct system.
- Low sound levels achieved through quiet running forward curved wheels and an acoustically insulated housing.
- The outlet duct includes an integral aluminum back draft damper that is easily converted from horizontal to vertical discharge positions.
- Model CSP fans are UL listed / licensed to bear the AMCA Certified Rating seals for air & sound performance
- Units are stocked with 115/60/1 motors


Dimensional Data

Number	A	B	C	D	E	F	G	CLE	CBUS	TOL
CSPA710	18	14.375	14.5	10	8	16.875	13.25			
CSPA190	13 1/4	10 5/8	10 1/2	8	6	12	9 1/4			
CSPA250	14	10 7/8	11 1/4	8	8	12 7/8	10			
CSPA390	14	10 7/8	11 1/4	8	8	12 7/8	10			

Performance Data

Number	RPM	AMPS	WATTS		Performance in inches WG						
					0	.125	.25	.375	.5	.75	1.00
CSPA710	1080	4.4	333	CFM	737	688	635	567	475		
				Sones	2.5	2.5	2.5	2.0	2.0		
CSPA190	1400	1.10	100	CFM	215	198	180	159	121		
				Sones	2.3	2.2	2.7	2.9	3.0		
CSPA250	1000	0.79	83	CFM	266	241	221	205	187	132	
				Sones	1.3	1.5	2.3	3.3	3.4	3.0	
CSPA390	1350	1.33	144	CFM	412	397	382	363	339	309	
				Sones	2.8	2.8	3.2	3.7	4.7	6.5	

CSP inline fans capacities range from 330 - 730 cfm

Indicates stocking location 



## Model #WD 100 Backdraft Damper



Number	Size	CLE	CBUS	TOL
WD1001010	10 x 10			
WD1001212	12 x 12			
WD1001616	16 x 16			
WD1001818	18 x 18			

- Galvanized steel
- No flange

## Model #SSC Solid State Controller



Number	Size	CLE	CBUS	TOL
SSC05	5 amp			
SSC10	10 amp			

- For use with shaded pole & open permanent split capacitor motors.
  - Requires 2 x 4 handy box by others.
  - For applications up to 5.0 amps

## Vari-Green Controls



Number	Size	CLE	CBUS	TOL
867008	Remote Dial			
387186	HOA - Hand / Off/Auto			

Paired with a Vari-Green motor, compatibility issues are eliminated and installation is greatly simplified. These controls are designed to meet the needs of manual and automated demand controlled operation.

## Model # ET5SRS Cooling T-Stat



Number	CLE	CBUS	TOL
ET5SRS			

- For ¾ H.P. or less

## Model #VI Kit Vibration Isolator Kit



Number	CLE	CBUS	TOL
VIKIT			

- For use in suspended fan installation
- Fan mounting brackets include pre-punched mounting holes for ease of installation.
- Kits include all hardware necessary to mount one unit, except for 10-32 threaded rod.

### Model # A110 Bathroom Vent Fan



Number	Size	CLE	CBUS	TOL
676	4"			

- 110 CFM 4.0 Sones
- Centrifugal blower wheel and 4-pole motor delivers high exhaust capacity at low sound levels.
- Designer styled white polymeric grille compliments virtually any décor



### Model # A70L Bathroom Vent Fan w/Light



Number	Size	CLE	CBUS	TOL
679B	4"			

- 70 CFM 3.5 Sones
- Bright 100 watt lighting capacity (bulb not included).
- Shatter resistant light diffusing lens
- Type IC (insulation contact)
- UL listed for use over bathtubs and showers



### Model # A80 Bathroom Vent Fan



Number	Size	CLE	CBUS	TOL
684	4"			


- 80 CFM 2.5 Sones
- Centrifugal blower wheel and 4-pole motor deliver high exhaust capacity at low sound levels.
- Designer styled white polymeric grille compliments virtually any décor



What factors determine what fan to buy for your bathroom?

For bathrooms 45 square feet and less, purchase a 50 CFM fan  
 For bathrooms 46 square feet to 75 square feet, purchase a 70 CFM or 80 CFM fan  
 For bathrooms 76 square feet to 105 square feet, purchase a 110 CFM fan  
 For bathrooms over 105 square feet, purchase a 150 CFM fan

Do you have attic access over the bathroom where you want to replace a bath fan?  
 What type of bath fan do you want?

Indicates stocking location 



# WALL AND ROOF CAPS

## Model # 613 Wall Cap For 12" round duct



Number	CLE	CBUS	TOL
613			

- Built-in backdraft damper & birdscreen
- Aluminum Natural Finish

## Model # 634 Roof Cap for for 3-1/4" x 10" round Duct



Number	CLE	CBUS	TOL
634			

- Built-in backdraft damper and birdscreen
- Steel baked enamel finish
- For pitched roofs

## Model # 636 Roof Cap for 3" or 4" round duct



Number	CLE	CBUS	TOL
636			

- Built-in backdraft damper and birdscreen
- Steel baked enamel finish
- For pitched roofs

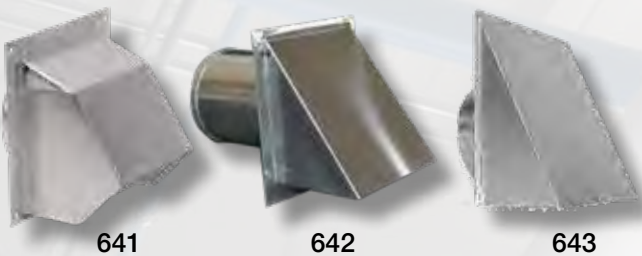
## Model # 639 Wall Cap for 3 1/4" x 10 duct



Number	CLE	CBUS	TOL
639			

- Spring loaded backdraft damper
- Built-in bird screen
- Steel baked black enamel finish

## Model # 641, 642, 643 Wall Cap round duct



Number	For Round Duct	CLE	CBUS	TOL
641	6"			
642	3" & 4"			
643	8"			

- Built-in backdraft damper
- Aluminum natural finish

## Model # 441 Wall Cap 10" for range hood or bath fans



Number	CLE	CBUS	TOL
441			

- Built-in birdscreen
- 24 Gauge Galvanized Steel

Number	Size	CLE	CBUS	TOL
N28	Cover w/2 sm. & 2 med. Clamps			
N62	Cover with 1 large clamp			
PCC1212	Fits 12 ½ x 12 ½ curb			
PCC5	Fits 15 ½ x 15 ½ curb (Pipes 5/8" to 2 7/8")			
Alumiflash	Alumi-flash			
RCC7	Roof Cap			



**N28**  
For two 3/8" thru 1" pipes and two 1" thru 2" pipes.



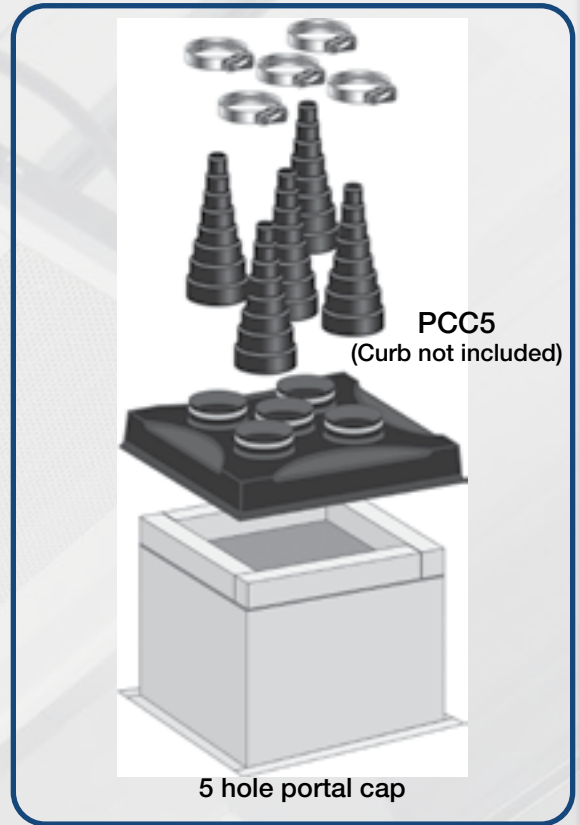
**N62**  
2" thru 6" pipe



**PCC1212**  
13" x 13" I.D. and two 1" thru 2" pipes.  
Reinforced ABS plastic cover.



**Alumi-Flash**  
.060 spun aluminum base



**PCC5**  
(Curb not included)

5 hole portal cap

The RPS Pipe Portal® System is designed to allow for both vertical and horizontal pipe movement, yet provide a maintenance-free permanent installation which accommodates round pipe sizes of 3/8" up to 12".

## Base Gravity Ventilator

Number	CLE	CBUS	TOL
GRS10			

- Exceptional low silhouette design and rugged
- 19 x 19 inch base w/pre-punched mounting holes for easy attachment to roof curb
- All aluminum exterior for corrosion-resistant construction
- Integral bird-screen to prevent entry of birds and small objects



## Model #RC2A Straight-Sided Curbs

Number	O.D. Size	CLE	CBUS	TOL
RC2A1412.5	12 ½ x 12 ½			
RC2A1413.5	13 ½ x 13 ½			
RC2A1415.5	15 ½ x 15 ½			
RC2A1417.5	17 ½ x 17 ½			
RC2A1420.5	20 ½ x 20 ½			
RC2A1424.5	24 ½ x 24 ½			
RC2A1427.512	27 ½ x 12			
RC2A1428.5	28 ½ x 28 ½			
RC2A1432.5	32 ½ x 32 ½			
RC2A1438.5	38 ½ x 38 ½			
RC2A1444.5	44 ½ x 44 ½			



- 14" High Roof Curb
- 2" Flange
- Wood Nailer

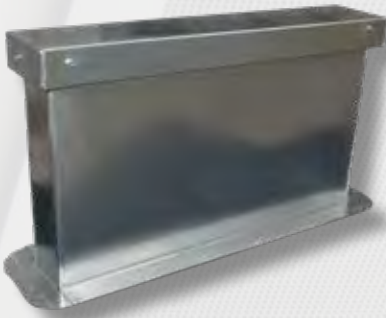
Note: Subtract 3" for I.D.

Indicates stocking location



# EQUIPMENT SUPPORT RAILS

## 14" High Straight Rail



- 2" Base Flange
- 2 x 4 Wood Nailer

Number	Size in ft	CLE	CBUS	TOL
ER2A141	1'			
ER2A142	2'			
ER2A143	3'			
ER2A144	4'			
ER2A146	6'			
ER2A148	8'			
ER2A1410	10'			
ER2A1412	12'			

\*The Maximum allowable uniform load for the above rails is 860 lbs. /ft.

\* The information above is recommended weight loading information by Roof Products & Systems.

## 14" High Canted Rails



- 2" Base Flange
- 2 x 4 Wood Nailer

Number	Size in ft	CLE	CBUS	TOL
ER3A141	1'			
ER3A142	2'			
ER3A143	3'			
ER3A144	4'			
ER3A146	6'			
ER3A148	8'			
ER3A1410	10'			

\*The Maximum allowable uniform load for the above rails is 450 lbs. /ft.

\* The information above is recommended weight loading information by Roof Products & Systems.

## Dektites



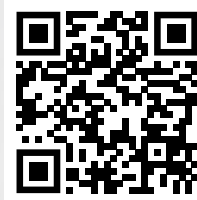
Number	Pipe Dia.	Base Dia.	CLE	CBUS	TOL
DT3	1/4" - 4"	7 3/4"			
DT4	3" - 6"	9 1/4"			
DT6	5" - 9"	13 1/2"			

- Temperature range -30 to +250 F
- Flexible aluminum base conforms to any panel.
- 2 For use with metal roof panels, aluminum, cooper, plastic, fiberglass, lead & wood



## Series 3320TTD-RP Fan Forced Wall Heater

Number	Watts	Volts	CLE	CBUS	TOL
3322TTDRP	1000	120V			
3323TTDRP	1125/1500	208/240			
3324TTDRP	1500/2000	208/240			
3325TTDRP	2250/3000	208/240			
3326TTDRP	3000/4000	208/240			
Wall Heater Accessories					
3310BOX	Rough In Box				
3320EX33	Surface Mount Box				



- Construction: Powder coated 18 ga. steel grille with extruded aluminum front frame.
- Vane axial fan blade – 600 RPM motor – 175 CFM
- Automatic fan delay switch
- Disconnect switch

Rough in dimensions:  
14-3/16" W x 19-15/16 H x 4" Deep  
Grill Dimensions:  
15-29/32" W x 20-27/32" H

## Series 2900 Baseboard Heaters



Number	Watts	Volts	Length	CLE	CBUS	TOL
E2907040A	750	120	40"			
E2910048A	1000	120	48"			
Baseboard Heater Accessories						
TBS	Thermostat	TBS				



- Construction: Powder coated 22 ga. steel front with 20 ga. junction boxes
- Over-temperature thermal limit extends entire length of heater .
- A full-length wireway provided along the back of the heater.
- Height 6" Depth 2 1/2"
- Finish: White

## Series 5100 Electric Unit Heater



Number	Watts	Volts	CLE	CBUS	TOL
F1F5103N	3.3	208/240			
F1F5105N	5.0	208/240			
Wall Heater Accessories					
A5105	Wall/Ceiling Mounting Bracket				
T5100	SPST Line Voltage T-Stat				
DCS202	Power Disconnect Switch (5103)				
DSC403	Power Disconnect Switch (5105)				



- Construction: Powder coated 18 ga. cabinet with hinged and latched access door
- Totally enclosed 1-speed 1 phase permanently lubricated, thermally protected motor with unit bearings.
- Louvers are individually adjustable for directional control of air flow up to 15 degree from straight horizontal
- Can be mounted for horizontal or vertical discharge. Application up to 6,000 ft.

Indicates stocking location

## Recessed Electric Wall-Mount Heater (1 Phase)



Number	Watts	Volts	CLE	CBUS	TOL
AWH4404F	1,500 - 4,000	208/240			
AWH4408F	2,000 / 4,000	208			

- Thermal overheat protector
- Steel finned metal sheath electric heating elements
- Built-in power disconnect switch and fan delay switch
- Integral thermostat for quick installation (Range: 40° - 90°F)

Rough in dimensions: 14.25" W x 18.25" H x 3.875" Deep  
Grill Dimensions: 15.75" W x 19.313" H

## Electric Architectural Wall-Mount Heater (1 Phase)



Number	Watts	Volts	CLE	CBUS	TOL
CWH1151DSW	750 / 1,500	120			

- Built-in power disconnect
- Built-in thermostat (Range: 40° - 85°F.)
- White powder coated heavy gauged galvanized steel

Rough in dimensions: 9.5" W x 11.25" H x 3.75" Deep

## Electric Wall & Ceiling Unit Heater (1 Phase)



Number	Watts	Volts	CLE	CBUS	TOL
MUH0381	3kW	208			
MUH0581	5kW	208			

- Individually adjustable louvers to direct air flow
- Automatic reset linear thermal cut-out, capillary type
- 3 kW and 5 kW have line voltage controls as standard
- Requires B10 mounting bracket & UHMT1 Thermostat
- Aluminum-finned, copper-clad steel sheath heating element

Dimensions: 14" W x 16" H x 7.5" Deep

## Electric Heater Accessories

Number	Description	CLE	CBUS	TOL
B10	Mounting Bracket, 20-1/2 in x 9-15/16 in, For Use With 3 to 10 kW MUH Unit Heaters			
AWH-SM	Surface mount frame 3.313" depth for AWH Series heaters			
MPDS25	Disconnect Switch, For Use With All Dayton® Electric Unit Heater Models			
UHMT1	Unit-Mount, Electric Wall & Ceiling Heater Thermostat, 40° to 120°F, 120/240/277V AC			
CWHSM	Surface Mounting Frame for CWH series heaters 12 1/2"H x 10 3/8"W x 4"D			

Stationary Louver



Number	Size	CLE	CBUS	TOL
ESJ4011212	12 x 12			
ESJ4012412	24 x 12			
ESJ4012424	24 x 24			
ESJ4013624	36 x 24			
ESJ4013636	36 x 36			
ESJ4014848	48 x 48			



- **Frame:**  
4" Deep Channel  
.081" Thick 6063-T5 Extruded Aluminum Alloy
- **Blades:**  
45 degree J Blade  
.081" Thick 6063-T5 Extruded Aluminum Alloy
- **Screen:**  
Interior, 1/2" removable expanded aluminum bird screen
- **Finish:**  
Mill

Model BEX Brick/Block Masonry Vents



Number	Minimum Opening Required	Nominal Size	Size	CLE	CBUS	TOL
EX847	8 3/4 x 5 1/4	8 1/8 x 4 3/4	8 x 4			
EX125	12 1/4 x 5 1/4	12 x 4 3/4	12 x 4			
EX128	12 1/4 x 8 1/4	12 x 7 3/4	12 x 8			
EX168	16 3/4 x 8 1/4	16 1/2 x 7 3/4	16 x 8			

- **Frame:**  
4" Deep .125" Extruded Aluminum
- **Blades:**  
Extruded Aluminum, appx. spacing is 1" @ 45 degrees
- **Screen:**  
Aluminum mesh insect screen
- **Mullions:**  
Visible
- **Finish:**  
Mill



Indicates stocking location 



# HORIZONTAL FIRE DAMPERS

## Model FD150AH



Number	Size	CLE	CBUS	TOL
FD15066	6 x 6			
FD15088	8 x 8			
FD15099	9 x 9			
FD1501010	10 x 10			
FD150128	12 x 8			
FD1501212	12 x 12			
FD1501410	14 x 10			
FD1501412	14 x 12			
FD150168	16 x 8			
FD1501612	16 x 12			
FD1501810	18 x 10			
FD1501812	18 x 12			
FD1501818	18 x 18			
FD1502010	20 x 10			
FD1502012	20 x 12			
FD1502210	22 x 10			
FD1502222	22 x 22			
FD1502412	24 x 12			
FD1502424	24 x 24			

- Frame Construction: One-piece roll formed 22 ga. galvanized steel
- Blade Construction: 22 Ga. Galvanized steel curtain-type
  - Fusible Link: UL listed 165°F; replaceable.

## Model FD150- Round



Number	Size	CLE	CBUS	TOL
FD1506	6"Ø			
FD1508	8"Ø			
FD15010	10"Ø			
FD15012	12"Ø			

- Frame Construction: One-piece roll formed 22 ga. galvanized steel
- Blade Construction: 22 Ga. Galvanized steel curtain-type
  - Fusible Link: UL listed 165°F; replaceable.

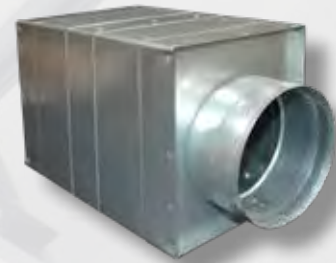
## Fusible Links



Number	Degree	CLE	CBUS	TOL
165CLE	165°			
212CLE	212°			

## Model DFD150 Dynamic Rated Fire Damper

Number	Outlet Size	Sleeve Size	CLE	CBUS	TOL
DFD150X126	6" Ø	12"			
DFD150X128	8" Ø	12"			
DFD150X1210	10" Ø	12"			
DFD150X1212	12" Ø	12"			
DFD150X1214	14" Ø	12"			



- 12" 20 Ga. Sleeve • Horizontal Mounting • Retaining Angles – 2 side loose • 165 degree Fusible Link

## Model CRD-2 Round Radiation Damper

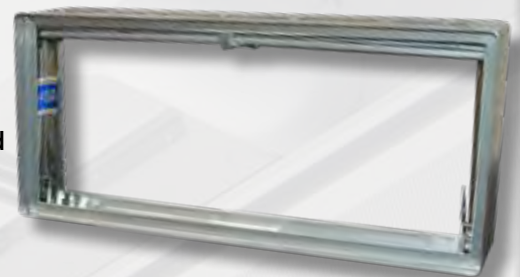
Number	Outlet Size	CLE	CBUS	TOL
CRD26	6" Ø			
CRD28	8" Ø			
CRD210	10" Ø			
CRD212	12" Ø			
CRD214	14" Ø			



- Frame Construction: One-piece roll formed 22 ga. Galvanized steel
- Blade Construction: 22 Ga. Galvanized steel
- Fusible Link: UL listed 165oF
- Spring Extension type
- Finish: Mill

## Model CRD-60 Square Ceiling Radiation Dampers

Number	Outlet Size	CLE	CBUS	TOL
CRD602222	22 x 22			
CRD602210	22 x 10			



- Frame Construction: One-piece roll formed 22 ga. Galvanized steel
- Tightly woven reinforced fiberglass fabric with aluminum impregnated fully sealed coating
- Stainless steel negator springs
- Fusible Link: UL listed 165°F
- Fabric riveted to blade; no adhesive used

## Mineral Wool Thermal Radiation Blanket

Number	Size	CLE	CBUS	TOL
RB693058	24 x 24			



Indicates stocking location

## Suggested Limit For Room Loudness

Sones	DBA	Occupancy
1.3 - 4.0	32 - 48	Private homes (rural & suburban)
1.7 - 5.0	36 - 51	Conference rooms
2.0 - 6.0	38 - 54	Hotel rooms, libraries, movie theaters, executive offices
2.5 - 8.0	41 - 58	Schools & classrooms, hospital wards & operating rooms
3.0 - 9.0	44 - 60	Court rooms, museums, apartment and private homes (urban)
4.0 - 12.0	48 - 64	Restaurants, lobbies, general open offices & banks
5.0 - 15.0	51 - 67	Corridors & halls, cocktail lounges, washrooms & toilets
7.0 - 21.0	56 - 72	Hotel kitchens and laundries, supermarkets
12.0 - 36.0	64 - 80	Light machinery, assembly lines
15.0 - 50.0	67 - 84	Machine shops
25.0 - 60.0	74 - 87	Heavy machinery

From AMCA Publication 302 Note: Values above are for room loudness and are not sound ratings. Room loudness is the resulting level in a conditioned space after the acoustical qualities of the room have been accounted for.

## Criteria for Acceptable HVAC Noise Levels In Unoccupied Rooms

NC	Occupancy
15 - 20	Concert and recital halls and recording studios
20 - 25	TV studios
25 - 30	Private residences, executive offices, conference rooms, hospital operating rooms and school lecture and classrooms
30 - 35	Apartments, hotel meeting rooms, private offices, hospital corridors & movie theaters
35 - 40	Hotel halls, corridors / lobbies, hospital laboratories and public areas, libraries & courtrooms
40 - 45	Office computer rooms and restaurants
45 - 50	Gymnasiums, supermarkets, post offices, locker rooms, laundries and bowling alleys
50 - 75	Warehouses, hangars, skating rinks, factories, machine shops and steel mills
64 - 80	Light machinery, assembly lines
67 - 84	Machine shops
74 - 87	Heavy machinery

Indicates stocking location 



## Fundamental Requirements for General Ventilation

Type of facility	Minutes / A.C.	Type of Facility	Minutes / A.C.
Assembly Halls	3 - 10	Laundries	2 - 5
Auditoriums	4 - 10	Locker Rooms	2 - 5
Bakeries	1 - 3	Machine Shops	3 - 5
Banks	3 - 10	Mills (paper)	2 - 3
Beauty Parlors	2 - 5	Mills (Textile)	3 - 15
Boiler Rooms	2 - 4	Offices	2 - 8
Bowling Alleys	2 - 8	Packing Houses	2 - 5
Churches	4 - 15	Production Rooms	1 - 2
Corridors	6 - 20	Projection Rooms	1 - 3
Dry Cleaners	1 - 5	Recreation Rooms	2 - 8
Engine Rooms	1 - 2	Residences	2 - 5
Factory (Gen Vent)	5 - 10	Restaurants	5 - 10
Factory (fumes)	1 - 5	Retail Stores	3 - 10
Forge Shops	1 - 2	Sales Rooms	3 - 10
Foundries	1 - 4	Shops (Gen Vent)	3 - 10
Garages (Repair)	2 - 10	Stores	5 - 10
Generating Rooms	2 - 5	Theaters	3 - 8
Glass Hants	1 - 2	Toilets	2 - 5
Gymnasiums	2 - 10	Transformer Rooms	1 - 5
Heat Treat Rooms	½ - 1	Waiting Rooms	10
Kitchens	1 - 3	Warehouses	2 - 10

The intention of this chart is to give you some basic formulas and guidelines for a proper general ventilation system. The objectives of a proper system are to remove hot, stale or stagnant air from the environment or to supply cooler, fresher air to the environment.

There are multiple methods of calculating the approx. required volume needed for a facility.

### Air Change Method

For personal comfort, this method works best if the facility is not over 100 feet in length and not greater than 50,000 cubic feet in capacity. For larger buildings, booster/circulator fans may be required.

$$\text{CFM} = \text{AREA TO BE VENTILATED (cubic feet)} / \text{Rate of Air Change (minutes)}$$

For the suggestions of air changes per number of minutes refer to the chart above.

1071T Tall Cone Flashing	29
10-Perforated Face Return Grille	11
12B Round Damper w/Ring	8
16 Round Residential Ceiling Diffusers	8
2 Row Hot Water Coil	15
26 Gauge Tee Joint - for Snaplock pipe	26
3800 Damper without Ring	8
441 Wall Cap 10" for range hood or bath fans	46
45° Elbow - for spiral pipe	18
45° Taps - for spiral pipe	23
520D-Double Deflection Louvered Supply Register with Damper"	9
530FF-Louvered Face Filter Return Grille	11
530-Louvered Return Grille	10
613 Wall Cap For 12" round duct	46
634 Roof Cap for for 3-1/4" x 10" round Duct	46
636 Roof Cap for 3" or 4" round duct	46
639 Wall Cap for 3 1/4"x 10 duct	46
641 Wall Cap for 6" round duct	46
642 Wall Cap for 3" or 4" round duct	46
80-Eggcrate Face Return Grille	11
90° 26 Gauge Adjustable Elbow - for Snaplock pipe	25
90° Elbow - for spiral pipe	18
90° Eyelet with Duct Trapeze Hanger	32
90° Eyelet with Express Hanger	32
A110 Bathroom Vent Fan	45
A70L Bathroom Vent Fan w/Light	45
A80 Bathroom Vent Fan	45
Adjustable G Roof Exhaust Direct Drive Fan	39
Adjustable Take Off - for Snaplock pipe	27
Balancing Damper w/ Full Blade	24
Base Gravity Ventilator	47
Baseboard Heaters	49
Bellmouth Take-Off	24
Blast Gates	29
Brick/Block Masonry Vents	51
Bulk Wire Rope-Galvanized	33
Cable Cutting Tool	33
Canted Rails	48
Chimney Cap - for Snaplock pipe	27
Conical Take Off w/Damper (Sheet metal fitting)	28
Connector - for spiral pipe	19
Coupling - for spiral pipe	19
CP101 Pneumatic Controller	15
CSP Cabinet Exhaust Fan	43
Custom Flow JS Series Slot Diffusers	13

DCD Series-2 Slot Diffuser	12
Dektites	48
Downblast Exhaust Roof Fan	40
Draw Bands	54
Drywall Access Door	34
Duct Sealant	33
Duct Smoke Detector	54
Duct Smoke Detector Key Test Annunciator	54
Duct Smoke Detector remote	54
Duct Smoke Detector Reset	54
Duct Smoke Detector Test Station	54
Eggcrate Sheets	12
Electric Architectural Wall-Mount Heater (1 Phase)	50
Electric Heater Accessories	50
Electric Unit Heater	49
Electric Wall & Ceiling Unit Heater (1 Phase)	50
End Cap- for spiral pipe	20
ET5SRS Cooling T-Stat	44
F3SC Square to Round Adapters w/Closed Corners	31
F3SO Square to Round Adapters w/Open Corners	30
Fan Forced Wall Heater	49
Fire Dampers	52-53
Flat Collar-Crimped - for Snaplock pipe	25
FLD SOG Take Off w/Damper (Sheet metal fitting)	28
FLDE-SOG-90 Take off w/ Damper & 90° Scoop	29
Framed Duct Access Doors - Cammed	34
Framed Duct Access Doors - Hinged	34
GB Roof Exhaust Belt Drive Fan	39
Gripple Fasteners	33
Loop End Fixing	32
Mineral Wool Thermal Radiation Blanket	53
Molded R6 Insulation Panel	4
One Quad Damper - for Snaplock pipe	27
PDC Perforated Supply Diffuser	6
PDDR/3 Perforated Return Diffuser	6
PDF/3 Perforated Supply Diffuser	6
PDMC/3 Modular Core Diffuser	6
PFRF -Perforated Return Panel	12
PIC Controller	15
Pipe 60" Lengths	25
Pipe Portals	47
Pneumatic Actuator	15
Pressure Relief Collar for VAV diffusers	7
RAC Return Air Canopy	13
RC2A Straight-Sided Curbs	47
RCDE-Round Cone Diffuser	7

Indicates stocking location 



# AIR CONTROL PRODUCTS PROUDLY REPRESENTS THESE PREMIER MANUFACTURERS





Air Control Products, Main Campus

Air Control Products is the trusted leader in the commercial HVAC industry. Simply put, Air Control Products is here to help you build better buildings.

Our in-house engineering team will assist you from the beginning of the design phase and be with you the entire way through the project. ACP's Architectural Division works hand in hand, design stage through install.

Our Architectural Division represents such manufacturers as Modernfold®, Skyfold®, Smoke Guard®, and Airolite®.

We are a stocking warehouse so our products for your designs are often in stock eliminating long lead times. Finally to get the job done, on time and on budget, we can deliver right to the job-site or to your door.

We strive to always be the trusted leader in our industry without losing sight of our core values: Care, Respect, Integrity, and Perseverance. We're proactive and realize we must offer not only the finest sales staff and products to our territory, but exceptional customer service and a fun and easy to do business with mentality.

Our commitment to our partners is reflected through our experienced salespeople, knowledgeable engineers, and our hardworking office and warehouse staff. We look forward to serving you.

Cleveland  
3800 Towpath Road  
Broadview Heights, Ohio 44147  
440-526-3020

Columbus  
1201 Essex Avenue  
Columbus, Ohio 43201  
614-299-1747

Toledo  
2164 Tedrow Road  
Toledo, Ohio 43614  
419-380-8990

